

2020 Study Abroad



Ako ki Tāwāhi

New Zealand





Lake Tekapo, Mackenzie Basin.

100+
COUNTRIES

*are represented at UC,
making for an inclusive and
diverse international campus*



Central Christchurch (Photo courtesy of Line Clemmensen, Study Abroad).

Contents

| | | | | | |
|---|------------------------|-------|---|----|----------------------------|
| 1 | Welcome to UC | 10 | Expand your horizons — subjects available | 22 | Accommodation at UC |
| 2 | Welcome to New Zealand | 11–18 | Undergraduate course list | 24 | Study Abroad UC |
| 4 | South Island | 19 | Plan your study | 26 | Application process |
| 6 | Canterbury | 20 | Learning through experience | 28 | Student visa and insurance |
| 8 | Why study at UC? | | | 29 | Study Abroad feedback |
| 9 | The student experience | | | | |

Cover images from top left:
 Roys Peak Track, South Island; Ali Smith (Study Abroad, USA);
 Mathew Birt (Exchange to Zhejiang Gongshang University, China); UC campus;
 Sofia Moniz Monroy (Portugal); Hao Zhang (China).

Published July 2019 by the University of Canterbury,
 Private Bag 4800, Christchurch 8140, New Zealand.

Information is correct as at the time of publication
 but is subject to change. The University's official
 regulations and policies are available online at
www.canterbury.ac.nz/regulations





Welcome to UC

E ngā pītau whakarei o tēnei waka, nāia te reo rāhiri e karanga atu ki a koutou.

Tauti mai ki Te Whare Wānanga o Waitaha!

Tēnā koutou katoa.



The University of Canterbury Te Whare Wānanga o Waitaha (UC) has much to offer our Study Abroad students.

Our natural environment, active student lifestyle, and world-recognised academic programmes have few equals anywhere in the world.

At this study destination, you will experience impressive new buildings which will provide you with a modern vibrant campus in which to learn.

UC encourages students to go beyond the classroom as part of your semester or year abroad.

We offer many unique experience-based courses, from service learning through to internships, and scientific field study.

These opportunities will provide you with real-world experiences, the opportunity to study with New Zealand students, and make new friends.

UC is proud to be a Commitment Partner of the Institute of International Education Generation Study Abroad initiative to increase the number of students studying abroad. We also offer a number of scholarships to support you.

We look forward to welcoming you to an exciting and diverse UC community in 2020, and we are confident you will have many opportunities to create unforgettable memories in New Zealand.

Professor Cheryl de la Rey
Vice-Chancellor | Tumu Whakarae



New Zealand was ranked

5TH

*in Lonely Planet's Best in
Travel 2018*

Kia ora — Welcome to New Zealand

As a Study Abroad student, you will experience all that Aotearoa New Zealand has to offer, from breathtaking landscapes to dynamic cities, and unlimited outdoor adventure. Here are some great reasons to study abroad at UC.

Spectacular natural environment

Made up of two main islands, the North and South Islands, Aotearoa New Zealand's pristine landscape features some of the world's most spectacular scenery, encompassing everything from mountains and glaciers, to beaches and rainforests.

Ōtautahi Christchurch is located in the centre of the South Island and offers unparalleled access to the island as a whole.

Population

UC is located in Christchurch, New Zealand's third largest city, and is the major hub of the South Island.

Temperate climate

With lots of sunshine, and the full range of spectacular seasons, New Zealand is an ideal study abroad option.

Average temperatures in Summer (December–February) are 20–30 °C (68–86 F), Winter (June–August) are 10–15 °C (50–59 F)

Action and adventure

Aotearoa New Zealand is a recreational paradise, with plenty of outdoor activities on offer including hiking, surfing, skiing, and sailing. Your leisure options are endless, from ziplining to penguin watching.

Dynamic Urban Centres

New Zealand's main cities are creative hubs for the arts, fashion, cafés, street art, and a thriving innovation scene.

High ratio of diversity

New Zealand is very multicultural:

- New Zealand European 74%
- Māori 14.9%
- Pacific Islander 7.4%
- Asian and others 11.8% (Stats NZ, 2013 Census)

Bicultural heritage in a multicultural society

Discover the richness of New Zealand's Māori culture. UC is strongly committed to biculturalism and the UC community is built on the foundations of aroha, manaaki, and whanaungatanga | compassion, generosity, and connection.





Mt Hutt ski field



Marlborough



Auckland



Franz Josef Glacier



Abel Tasman/Golden Bay



Queenstown



Hanmer Springs



Milford Sound



Wellington

Christchurch



Kaikōura



University of Canterbury



Akaroa



The Catlins



Lake Tekapo



Arthur's Pass



10

*of New Zealand's 14 National parks
are located in the South Island of
New Zealand*

Gateway to the South Island

Home to Aotearoa New Zealand's most breathtaking landscapes, Te Waipounamu South Island is world renowned for its natural beauty and recreational opportunities.

From mountains to the sea, the dramatic terrain of the South Island offers a range of memorable leisure experiences.

Christchurch is the largest city in the South Island, and the most centrally located major city. As a result, it acts as the gateway to the South Island, and the ideal base from which to explore.

Tick the following off your bucket list

Surf and ski in the same day

Christchurch is on the doorstep of a huge outdoor 'playground' – with ten ski fields within a two-hour drive, and beautiful beaches close by, you can surf and ski in the same day.

Explore golden beaches and waterways

At the top of the South Island, the waterways of the Marlborough Sounds are made up of the Queen Charlotte, Kenepuru, Pelorus, and Mahau Sounds, and are a popular place for fishing, diving, boating, and dolphin watching.

Nelson is the oldest city in the South Island. Situated at the top of the island, it is well known for its local arts and crafts.

You can explore golden beaches and the lush coastal Abel Tasman National Park; or get out on the water into the tranquil Marlborough Sounds.



'Here in New Zealand, there are pretty epic mountains, rivers, and beaches right on our doorstep, and UC for me had the benefit of its central location to most things in the South Island.'

Ellorine Carle

USA



See the glaciers

The South Island's West Coast is an environmental wonderland of ice age glaciers, waterfalls, lakes, forest, and rugged coastline.

The Franz Josef Glacier is a remnant of a 7,000 year old larger glacier that originally swept right to the sea. Today, it is 12 kilometres long, from the high snowfields of the Southern Alps.

The world-famous Fox Glacier is one of the longest of the West Coast glaciers – you can take a breathtaking guided walk right onto the glacier.

Experience adventure and nightlife

The buzzing town of Queenstown has much to offer those seeking an adrenaline fix. It is famous for its white water rafting, skiing, jet boating, and bungee jumping, and is home to the beautiful and tranquil Lake Wakatipu, New Zealand's third largest lake.

The nightlife, cafés, and bars also make this a favourite South Island destination.

Check out the Southern Alps

The South Island is home to the magnificent Southern Alps mountain range which runs down the 'spine' of the Island. Its tallest peak is Aoraki Mount Cook, the highest point in New Zealand at 3,724 metres (12,218 ft).

Discover Fiords

Fiordland occupies the southwest corner of the South Island and consists of fourteen fiords. It is home to fur seal colonies, penguins, and dolphins. Fiordland has achieved World Heritage Status for its natural beauty.

Milford Sound is one fiord situated in the southwest of the South Island and is admired for its staggering Mitre Peak, and its rainforests and waterfalls. Boat tours are a popular way to explore.

Soak up spectacular landscapes

The Catlins is a major highlight of the Southern Scenic Route.

Located off the beaten track, the Catlins journeys through rural heartland and forests, past rugged coastlines, hidden lakes, stunning waterfalls, and a variety of wildlife.

AT A GLANCE

3rd New Zealand is ranked #3 out of 50 economies for instilling future skills*

4th New Zealand is ranked #4 in the world for its natural environment

12th largest island in the world, the South Island contains one quarter of the New Zealand population

* The Economist Intelligence Unit 2018.
^ Legatum Prosperity Index, 2018.



New Regent Street, Central Christchurch
(Photo courtesy of Pauline Fritsche, Germany).



Port Hills, Canterbury.

4 ZIPLINES

The Christchurch Adventure Park features the world's first lift-accessed, all-season mountain biking facility and New Zealand's highest and longest zipline

Go Canterbury

Ōtautahi Christchurch is a recreational hot spot within easy reach of all the fun and adventure the region has to offer. It is the gateway to the South Island, and located in the province of Waitaha Canterbury.

With a population of around 380,000, Christchurch is the largest city and the economic centre of the South Island.

A recreational hub

Christchurch's location on the east coast makes it perfect for water sports, with six swimming beaches within 30 minutes' drive from UC.

There are a number of rivers and lakes, including the picturesque Avon River which runs right through the city.

The city's Port Hills are popular for walking, rock climbing, and mountain biking.

Hagley Park in the centre of the city has 165 hectares of park-like grounds.

Vibrant entertainment options

Christchurch has a busy calendar of events — from art exhibitions and cultural celebrations to sporting events and music festivals.

There are over 900 restaurants, cafés, and bars to sample, many of them close to UC.

Christchurch is also home to theatres and over 740 city parks.

Leisure and lifestyle

In 2019, Christchurch topped CNN's list of 19 places to visit — describing the city, its buildings, and culture as “elegant”, “gorgeous”, “colourful”, and “dynamic”.

Visit the new city precincts with displays of vibrant street art that represent the revitalisation of the central city.



‘Study Abroad is definitely one of the most memorable experiences of my life. I am a person with a global mind and enjoy learning new languages and culture.’

Gloria Leung
Hong Kong



The Canterbury region

A temperate climate with lots of sunshine and a full range of spectacular seasons, Canterbury is an ideal place to explore throughout the year.

Canterbury has more ski areas than anywhere in the Southern Hemisphere, making it a winter playground.

www.christchurchnz.com/winter-in-christchurch-and-canterbury

A few spots to explore

Akaroa

Akaroa is a town on the Banks Peninsula, southeast of Christchurch. Akaroa Beach is on the eastern shore of Akaroa Harbour, where rare Hector's dolphins swim. Some boat cruises even have on-board dolphin-spotting dogs who can hear underwater sonar activity.

Aoraki Mount Cook National Park

Home to New Zealand's majestic Mount Cook, 40% of the national park is covered by glaciers, and there are over 19,000 peaks higher than 3,000 ft.

At 29 kilometres long, and up to 3 kilometres wide, the Tasman glacier is one of the longest glaciers in the world outside the polar region.

The area offers hiking, climbing, snowsports, and kayaking with breathtaking views of the Southern Alps, and the foothills of Mount Cook are just a 90-minute drive from Christchurch.

Kaikōura

A seaside town with sweeping mountain and ocean views, this is a place where visitors can commune with nature's wonders and spot whales, dolphins, seals, and sea birds.

Lake Tekapo

Lake Tekapo's magnificent unpolluted night skies attract visitors and star-gazers from all over the world.

The astronomical observatory on top of Mount John, near Lake Tekapo, provides outstanding conditions for observations and discoveries of the southern sky.

UC's School of Physical and Chemical Sciences runs the observatory and students and staff are able to use the facilities.

Mount Hutt

The mountain is home to a commercial alpine ski area, and prides itself on historically being the first ski-field in the Southern Hemisphere to open at the beginning of each ski season. It has the largest skiable area in the South Island (3.65 square kilometres), and a vertical height of 683 metres. The snow season runs from June to October.

AT A GLANCE

6 beaches are a short drive from UC

10 ski fields, within two hours' drive of UC

75 years old. The CUSSC (Canterbury University Snow Sports Club) is the only university club in New Zealand to own a ski field lodge, located at the Temple Basin Ski Field

Why study at UC?



UC is among the world's top 1% of universities and was the first New Zealand university to receive the prestigious QS 5-star ranking for overall excellence.

An outstanding community

Founded in 1873, Te Whare Wānanga o Waitaha University of Canterbury (UC) is known for:

- a supportive campus community
- high-quality courses (pages 11–18)
- unique applied learning opportunities, including internships, service learning, and community engagement (pages 20–21).

* QS World University Rankings by Subject, 2019.
^ The TEC Performance-Based Research Fund Assessment (PBRF), 2018.

Learn from the best

- 11 UC disciplines are ranked in the top 200 of the world's universities.*
- Outstanding teachers are recognised through teaching awards and the UC Teaching Medal.
- Te Kura Umanga | UC Business School holds 'Triple-Crown' accreditation by AMBA, EQUIS, and AACSB, putting it in the top 1% of business schools worldwide.
- Engineering programmes are accredited by the Institution of Professional Engineers New Zealand, which is a signatory to the Washington Accord.
- Speech and Language Pathology programmes are accredited by the New Zealand Speech-language Therapists' Association.
- UC's Erskine programme brings 75 experts from around the world to teach at UC each year.

Research-led programmes

- We are home to over 40 recognised research centres, institutes, and hubs.
- UC is an important research university in Australasia.
- UC is ranked 3rd in New Zealand for research intensity of its academic staff.^

Globally connected

- UC is the only New Zealand university to be a member of the AC21 Academic Consortium; 19 of the world's leading research universities.
- UC is a commitment partner of the IIE Generation Study Abroad initiative to increase the number of US students studying abroad.
- UC is the only New Zealand university to be a member of the global engineering exchange programme Global E³.

A vibrant campus

Facilities to support your study at UC include modern lecture theatres, innovative learning hubs, well-resourced libraries, computer suites, and an Academic Skills Centre.

UC's Rutherford Regional Science and Innovation Centre (RRSIC) allows Science students to access state-of-the-art, specialist teaching and research laboratories.

Support services

With dedicated support services, a focus on student health and well-being, and so many clubs, events, and outdoor adventure activities on our doorstep, you will have an unforgettable UC experience.

An unforgettable student experience on campus



Diversity

UC embraces diversity and is inclusive of all ethnicities, nationalities, gender identities, and religions. Our vibrant campus makes it easy for you to make friends and form social groups that you can relate to.



International Welcome

This is a special orientation for all new international students, and is a great way for you to get to know the UC community.
www.canterbury.ac.nz/international/support/welcome



Study with Kiwi students

As part of your Study Abroad student experience, you'll study alongside New Zealand students.



Your support team

UC has dedicated, trained staff who provide in-depth advice on settling into UC, and will support you throughout your semester.
www.canterbury.ac.nz/support



Balanced lifestyle

UC is the only fully purpose-built, self-contained residential university campus in the country. The campus is located just 5km from the city centre.



Join a club and get involved

There are more than 160 clubs at UC, covering almost every interest imaginable from sports, politics, and international, through to community, performing arts, and social focuses.
www.ucca.org.nz/clubs/find-a-club



Sport and Fitness

UC Sport has group fitness, sport courts, social sport, and full weights and cardio options.
www.canterbury.ac.nz/uccecentre

Basic gym membership is free to all students. Online sign up is essential. Small charges apply for non-basic services.



Expand your horizons



Study Abroad is a great way to expand your academic horizons and tackle exciting new subjects.

Combinations to suit you

The undergraduate Study Abroad tuition fee is a one-price package that enables you to choose courses from different subjects, so you can put together a programme of study that best meets your needs and interests. View pages 11-18 for available courses and see page 19 for fees and costs.

Try something new

UC offers a comprehensive range of courses, including several that you're unlikely to come across in your home country, such as Māori language and culture; Antarctic Studies; and courses in New Zealand and Pacific literature, history, and politics. Whichever courses you choose, you'll study alongside Kiwi students.

Semesters

At UC, semesters are as follows:

Semester 1 – February–June

Semester 2 – July–November

www.canterbury.ac.nz/courses

Workload

Standard workload is 60 points per semester. The minimum workload is 45 points and the maximum is 75 points per semester.

Courses and prerequisites

Arts, Commerce, and Science degrees at UC are three-year programmes, therefore 300-level courses are the most advanced undergraduate courses offered. The 400-level courses in these subjects are postgraduate courses, only open to graduate-level students.

Professional degrees such as Engineering, Forestry, Social Work, and Speech and Language Pathology are four-year programmes, and 400-level courses in these subjects may be available to Study Abroad students with sufficient previous study.

As long as you meet prerequisite requirements, you can normally take most undergraduate courses offered at UC. A few areas have courses which have limited entry.

www.canterbury.ac.nz/enrol/special

UC will seek pre-approval for you to take the courses you list with your online application so that you know before arriving that you can take the courses you need.

For questions about how your UC courses will transfer to your home university degree, please consult with the Study Abroad office at your home university.

Note: before leaving home, check that your courses can be credited to your home university degree.

Study outside the classroom

UC has an extensive network of field stations for student and staff research. These offer multiple field study opportunities, and many Science courses include field trips that feature New Zealand's unique flora and fauna, geology, biodiversity, and marine life.

Postgraduate study

UC also welcomes applications to postgraduate courses from graduate students who have completed a bachelor's degree overseas.

For information on postgraduate courses, prerequisites, and tuition fees, go to www.canterbury.ac.nz/courses

2019 undergraduate courses

Course information is subject to change. The following undergraduate courses are offered in 2019 and are indicative only, and not a complete list. When planning your courses, make sure you go to www.canterbury.ac.nz/courses and check that your courses are offered in the semester you plan to study at UC.

Accounting

| | |
|----------|--|
| ACCT 102 | Accounting and Financial Information |
| ACCT 103 | Accounting and Taxation: An Introduction |
| ACCT 152 | Law and Business |
| ACCT 211 | Financial Accounting |
| ACCT 212 | Accountants: skills, attributes and practice |
| ACCT 222 | Management Accounting |
| ACCT 252 | Law of Business Contracts |
| ACCT 254 | Taxation |
| ACCT 256 | Law of Business Organisations |
| ACCT 311 | Financial Accounting: Theory & Practice |
| ACCT 312 | Advanced Financial Accounting |
| ACCT 316 | Public Management and Governance |
| ACCT 332 | Advanced Management Accounting |
| ACCT 340 | Social and Environmental Reporting |
| ACCT 341 | Public Accounting and Finance |
| ACCT 346 | Auditing |
| ACCT 356 | Advanced Auditing |
| ACCT 358 | Advanced Taxation |
| ACCT 359 | Further Issues in Advanced Taxation |
| ACCT 390 | Accounting Internship |

Antarctic Studies

| | |
|----------|--------------------------------|
| ANTA 101 | Antarctica |
| ANTA 102 | Antarctica: The Cold Continent |
| ANTA 103 | Antarctica: Life in the Cold |

Anthropology

| | |
|----------|--|
| ANTH 102 | Cultural Diversity and The Making of The Modern World |
| ANTH 105 | Human Evolution |
| ANTH 212 | Kinship and Family in Comparative Perspective |
| ANTH 213 | Environment, Development and Disaster |
| ANTH 223 | Ethnicity and History |
| ANTH 238 | Exploring the Past: Museums, Memory and Material Culture |
| ANTH 301 | Doing Ethnography: Concepts and Practices |
| ANTH 312 | Kinship and Family in Comparative Perspective |
| ANTH 313 | Environment, Development and Disaster |
| ANTH 388 | Contested Heritage: Politics, Power and Practice |

Art History and Theory

| | |
|----------|--|
| ARTH 103 | 'Picasso who?' Introducing Modern Art |
| ARTH 112 | Art and Things: introduction to Art History and Material Culture |
| ARTH 210 | Japanese Art |
| ARTH 215 | International Contemporary Art |
| ARTH 218 | Images in circulation: Print, photography, and pixels |
| ARTH 325 | Aesthetic Theory |
| ARTH 328 | Art of the Floating World |
| ARTH 329 | In search of Nowhere: the international Arts and Crafts Movement |
| ARTH 330 | Medium and Materiality in Contemporary Art |

Astronomy

| | |
|----------|--|
| ASTR 112 | Astrophysics |
| ASTR 211 | Observational Astronomy |
| ASTR 231 | Observational Astronomy |
| ASTR 326 | Special Topic: Stars and the Interstellar Medium |
| ASTR 381 | Advanced Experiments in Physics and Astronomy |
| ASTR 391 | Introductory Astronomy Research |

Biochemistry

| | |
|----------|--|
| BCHM 111 | Cellular Biology and Biochemistry |
| BCHM 112 | Structure and Reactivity in Chemistry and Biochemistry |
| BCHM 202 | Foundations in Molecular Biology |
| BCHM 206 | Organic Chemistry |
| BCHM 207 | Special Topic |
| BCHM 212 | Chemical Reactivity |
| BCHM 222 | BIOCHEMISTRY B - Metabolism; the reactions of molecules in cells |
| BCHM 253 | Cell Biology I |
| BCHM 281 | Practical Biochemistry |
| BCHM 303 | Special Topic |
| BCHM 304 | Special Topic |
| BCHM 305 | Protein Science |
| BCHM 306 | Biochemical Pathology |
| BCHM 338 | Chemical Biology |
| BCHM 339 | Bioinorganic and Bioorganic Chemistry |
| BCHM 381 | Biochemical Techniques |

Biological Sciences

| | |
|----------|-------------------------------------|
| BIOL 111 | Cellular Biology and Biochemistry |
| BIOL 112 | Ecology, Evolution and Conservation |
| BIOL 113 | Diversity of Life |
| BIOL 116 | Human Biology |
| BIOL 209 | Biological Data Analysis |
| BIOL 210 | Vertebrate Biology |
| BIOL 212 | Marine Biology and Ecology |
| BIOL 213 | Microbiology and Genetics |

| | |
|----------|--|
| BIOL 215 | Origins and Classification of Life |
| BIOL 231 | Foundations in Molecular Biology |
| BIOL 250 | Principles of Animal Physiology |
| BIOL 253 | Cell Biology I |
| BIOL 254 | Principles of Plant Physiology |
| BIOL 270 | Ecology |
| BIOL 271 | Evolution |
| BIOL 272 | Principles of Animal Behaviour |
| BIOL 273 | New Zealand Biodiversity and Biosecurity |
| BIOL 305 | Practical Field Botany |
| BIOL 306 | Special Topic |
| BIOL 307 | Special Topic |
| BIOL 308 | Special Topic |
| BIOL 309 | Experimental Design and Data Analysis for Biologists |
| BIOL 313 | Advanced Microbiology |
| BIOL 332 | Genetics, Evolution and Ecology of Invasive Species |
| BIOL 333 | Molecular Genetics |
| BIOL 334 | Evolutionary Genetics and Genomics |
| BIOL 351 | Cell Biology 2 |
| BIOL 352 | Plant Development and Biotechnology |
| BIOL 354 | Animal Ecophysiology |
| BIOL 355 | Neurons, Hormones and Behaviour |
| BIOL 371 | Evolutionary Ecology |
| BIOL 375 | Freshwater Ecosystems |
| BIOL 377 | Global Change and Biosecurity |
| BIOL 378 | Population Ecology and Conservation |
| BIOL 383 | Behavioural Ecology |
| BIOL 384 | Marine Ecosystems |

Biosecurity

| | |
|----------|-----------------------------------|
| BIOS 201 | Issues in New Zealand Biosecurity |
|----------|-----------------------------------|

Business

| | |
|----------|---|
| BSNS 201 | Business and Culture |
| BSNS 290 | Special Topic: Enterprise in Practice - Project |
| BSNS 299 | UC Employability Portfolio |

Chemical and Process Engineering

| | |
|----------|---|
| ENCH 199 | Workshop Training Course for Chemical and Process Engineering |
| ENCH 241 | Engineering Chemistry 2 |
| ENCH 281 | Principles Of Biology For Engineers |
| ENCH 291 | Mass and Energy Balances |
| ENCH 292 | Heat and Mass Transfer Operations |
| ENCH 293 | Fluid Mechanics 1 |

| | |
|----------|---|
| ENCH 295 | Chemical Engineering Professional Practice |
| ENCH 296 | Chemical Engineering Thermodynamics |
| ENCH 298 | Chemical Engineering Mathematics |
| ENCH 390 | Process Analysis |
| ENCH 391 | Process Systems and Control |
| ENCH 392 | Thermodynamics And Chemical Reaction Engineering |
| ENCH 393 | Fluid Mechanics and Heat Transfer |
| ENCH 394 | Process Engineering Design 2 |
| ENCH 395 | Process Engineering Laboratories |
| ENCH 396 | Chemical Engineering Separations 1 |
| ENCH 475 | Independent Course of Study |
| ENCH 482 | Bioprocess Engineering 2 |
| ENCH 483 | Advanced Energy Processing Technologies and Systems |
| ENCH 484 | Advanced Modelling and Simulation |
| ENCH 494 | Process Engineering Design 3 |
| ENCH 495 | Research Project |
| ENCH 496 | Advanced Separations |
| ENCH 497 | Process Management |

Chemistry

| | |
|----------|---|
| CHEM 111 | Chemical Principles and Processes |
| CHEM 112 | Structure and Reactivity in Chemistry and Biochemistry |
| CHEM 114 | Foundations of Chemistry |
| CHEM 211 | Molecules |
| CHEM 212 | Chemical Reactivity |
| CHEM 242 | Organic Chemistry |
| CHEM 251 | Foundations of Materials Science and Nanotechnology |
| CHEM 255 | Contemporary Chemistry: Technology, Environment, and Health |
| CHEM 281 | Practical Chemistry |
| CHEM 327 | Special Topic |
| CHEM 328 | Special Topic |
| CHEM 329 | Special Topic: Introductory Research in the Chemical Sciences |
| CHEM 333 | Chemical Physics and Spectroscopy |
| CHEM 335 | Organometallic Chemistry and Catalysis |
| CHEM 336 | Supramolecular Chemistry and Molecular Engineering |
| CHEM 337 | Organic Synthesis |
| CHEM 340 | Environmental Chemistry and Toxicology |

| | | | | | | | |
|--------------------------|--|--|--|-----------------------------|---|---------------------------|--|
| CHEM 343 | Materials Science and Nanotechnology | ENCI 498 | Special Topic | CMDS 320 | Spoken and Written Language Disorders in Education | CRJU 307 | Issues in Policing, Prosecution and Alternatives to Prosecution |
| CHEM 381 | Advanced Synthetic Techniques | ENCN 401 | Engineering in Developing Communities | CMDS 363 | Motor Speech Disorders | CRJU 308 | The Principles of Evidence |
| CHEM 382 | Instrumental Methods | ENCN 412 | Traffic Engineering | CMDS 365 | Dysphagia and Related Disorders - Diagnosis | | |
| Chinese | | ENCN 415 | Pavement Engineering | CMDS 366 | Dysphagia and Related Disorders - Management | Cultural Studies | |
| CHIN 151 | Chinese Language 1-A | ENCN 444 | Water Infrastructure and Design | CMDS 367 | Voice Science and Disorders | CULT 114 | Aotearoa - Introduction to New Zealand Treaty Society |
| CHIN 152 | Chinese Language 1-B | ENCN 445 | Environmental Fluid Mechanics | CMDS 369 | Aphasia and Related Disorders | CULT 150 | Music in Aotearoa New Zealand |
| CHIN 155 | Understanding China | ENCN 452 | Advanced Geotechnical Engineering | CMDS 381 | Applied Research and Clinical Practice 3 | CULT 201 | Media Audiences |
| CHIN 206 | Chinese Cinema and Contemporary Chinese Culture | ENCN 454 | Geotechnical Earthquake Engineering | CMDS 382 | Clinical Practice 4 | CULT 202 | Cultural Politics/ Cultural Activism |
| CHIN 251 | Chinese Language 2-A | ENCN 470 | Professional Engineering Development | CMDS 420 | Professional Studies 1 | CULT 206 | From Bambi to Kong: The Animal in Popular Culture |
| CHIN 252 | Chinese Language 2-B | ENCN 481 | Environmental Engineering Design | CMDS 451 | Fluency Disorders | CULT 207 | Constructing Bodies |
| CHIN 306 | Chinese Cinema: History and Recent Development | ENCN 493 | Project | CMDS 461 | Complex Communication Disorders | CULT 219 | Te Tiriti: The Treaty of Waitangi |
| CHIN 351 | Chinese Language 3-A | ENGR 403 | Fire Engineering | CMDS 468 | Professional Studies 2 | CULT 252 | Crime Stories |
| CHIN 352 | Chinese Language 3-B | | | CMDS 482 | Clinical Practice 5 | CULT 302 | Takahi: Colonisation |
| Cinema Studies | | Classics | | CMDS 484 | Clinical Practice 6 | CULT 303 | Sexualities in Culture |
| CINE 102 | The Backpacker's Guide to World Cinema | CLAS 104 | Greek Mythologies | CMDS 490 | Research Project | CULT 310 | Sociology of the City |
| CINE 104 | The Oscar for Best Picture: The Envelope Please! | CLAS 105 | Roman Mythologies | CMDS 491 | Capstone Project | CULT 319 | Ngati Apopo: Māori Futures |
| CINE 201 | Hollywood and Genre | CLAS 111 | Greek History | Community Engagement | | | |
| CINE 202 | Film and Theory | CLAS 112 | Roman History | CHCH 101 | Strengthening Communities through Social Innovation | CULT 322 | Documentary: From the Margins to the Mainstream |
| CINE 213 | Kiriata: Māori Film and Media | CLAS 134 | Beginners' Greek A | Computer Engineering | | | |
| CINE 214 | European Novels and Film Adaptations | CLAS 135 | Beginners' Greek B | ENCE 260 | Computer Systems | CULT 333 | The Exotic |
| CINE 215 | Chinese Cinema and Contemporary Chinese Culture | CLAS 144 | Beginners' Latin A | ENCE 360 | Operating Systems | CULT 336 | Heroines in History |
| CINE 301 | Film History: The Sixties and the New Wave | CLAS 145 | Beginners' Latin B | ENCE 361 | Embedded Systems 1 | CULT 352 | Crime Stories |
| CINE 302 | Documentary: From the Margins to the Mainstream | CLAS 213 | Alexander the Great | ENCE 461 | Embedded Systems 2 | Data Science | |
| Civil Engineering | | CLAS 220 | Troy and Ancient Epic | ENCE 464 | Embedded Software and Advanced Computing | DATA 201 | Data Wrangling |
| ENCI 199 | Health & Safety on the Worksite | CLAS 222 | Ancient Economies | Computer Science | | | |
| ENCN 201 | Communication Skills Portfolio 1 | CLAS 234 | Intermediate Greek Authors 1 | COSC 101 | Working in a Digital World | DATA 301 | Big Data Computing and Systems |
| ENCN 213 | Design Studio 1 | CLAS 235 | Intermediate Greek Authors 2 | COSC 121 | Introduction to Computer Programming | Digital Humanities | |
| ENCN 221 | Engineering Materials | CLAS 244 | Intermediate Latin Authors A | COSC 122 | Introduction to Computer Science | DIGI 101 | Working in a Digital World |
| ENCN 231 | Solid Mechanics | CLAS 245 | Intermediate Latin Authors B | COSC 261 | Formal Languages and Compilers | DIGI 102 | Computers, Artificial Intelligence, and the Information Society |
| ENCN 242 | Fluid Mechanics and Hydrology | CLAS 310 | Writing in Chains: Latin Literature and Roman Slavery | COSC 262 | Algorithms | DIGI 103 | Statistics 1 |
| ENCN 253 | Soil Mechanics | CLAS 325 | Roman Social History | COSC 264 | Introduction to Computer Networks and the Internet | DIGI 125 | Music Technologies 1 |
| ENCN 261 | Transport and Surveying | CLAS 326 | Concepts of Art and Literature from Homer to Aristotle | COSC 265 | Relational Database Systems | DIGI 202 | Cyberspace, Cyborgs, and the Meaning of Life |
| ENCN 281 | Environmental Engineering | CLAS 335 | Advanced Greek Authors | COSC 362 | Data and Network Security | DIGI 205 | Introduction to Geographic Information Systems |
| ENCI 335 | Structural Analysis | CLAS 345 | Advanced Latin Authors | COSC 363 | Computer Graphics | DIGI 207 | Social Media and Public Life |
| ENCI 336 | Structural Design | Communications, Media and Communications | | COSC 364 | Internet Technology and Engineering | DIGI 210 | Big Data and society: Navigating Concepts, Methods and Critical Perspectives |
| ENCN 301 | Communication Skills Portfolio 2 | Communication Disorders (Speech and Language Pathology) | | COSC 366 | Research Project | DIGI 301 | Reading Digitally: Electronic Texts in Literary Culture |
| ENCN 304 | Deterministic Mathematical Methods | CMDS 113 | Introduction to Communication Disorders | COSC 367 | Artificial Intelligence | DIGI 302 | Cyberspace, Cyborgs, and the Meaning of Life |
| ENCN 305 | Programming, Statistics and Optimization | CMDS 114 | The Science of Human Communication | COSC 368 | Humans and Computers | Economics | |
| ENCN 342 | Fluid Mechanics and Hydraulics | CMDS 161 | Anatomy and Physiology of the Speech, Hearing and Swallowing Mechanism | Criminal Justice | | | |
| ENCN 353 | Geotechnical Engineering | CMDS 222 | Language Disorders in Children | CRJU 101 | Introduction to Criminal Justice | ECON 104 | Introduction to Microeconomics |
| ENCN 371 | Project and Infrastructure Management | CMDS 223 | Clinical Linguistics and Phonetics | CRJU 201 | Crime and Justice | ECON 105 | Introduction to Macroeconomics |
| ENCN 375 | Sustainable Engineering for a Changing Climate | CMDS 232 | Speech Sound Disorders | CRJU 202 | Criminal Law and Procedure | ECON 206 | Intermediate Macroeconomics |
| ENCI 423 | Advanced Structural Analysis and Dynamics | CMDS 243 | Introduction to Audiologic Assessment and Management | CRJU 211 | Forensic Science for Criminal Justice | ECON 207 | Intermediate Macroeconomics - Households and Government |
| ENCI 425 | Structural Steel | CMDS 263 | Evaluating Research for Clinical Practice | CRJU 301 | Sentencing Theory and Practice | ECON 208 | Intermediate Macroeconomics - Firms and Markets |
| ENCI 426 | Structural Concrete | CMDS 281 | Observation and Clinical Practice 1 | CRJU 302 | Prisons and Corrections | ECON 213 | Introduction to Econometrics |
| ENCI 427 | Timber Structures | CMDS 282 | Clinical Practice 2 | CRJU 304 | Research Essay in Criminal Justice | | |
| ENCI 429 | Structural Systems | | | | | | |
| ENCI 475 | Independent Course of Study | | | | | | |

ECON 222 International Trade
 ECON 223 Introduction to Game Theory for Business, Science and Politics
 ECON 225 Environmental Economics
 ECON 228 Study Tour to South America
 ECON 310 Economic Thinking for Business
 ECON 314 Economic Analysis of “Big Data”
 ECON 321 Microeconomic Analysis
 ECON 323 Time Series Methods
 ECON 324 Econometrics
 ECON 326 Macro and Monetary Economics
 ECON 329 Industrial Organisation
 ECON 331 Financial Economics
 ECON 335 Public Economics 1
 ECON 338 Health Economics Overview
 ECON 339 The Economics of European Integration
 ECON 340 Development Economics
 ECON 343 The Economics of Innovation, Creativity and Intellectual Property
 ECON 344 International Finance
 ECON 390 Internship or Consultancy Project

Education

Contact the International Relationships Office for further information on Teacher Education courses.

CHCH 101 Strengthening Communities through Social Innovation
 EDUC 101 Spark! How & What People Learn
 EDUC 102 Child and Adolescent Development
 EDUC 103 Education, Culture and Society
 EDUC 202 One in Four: Different Developmental Pathways
 EDUC 204 Promoting Child and Adolescent Wellbeing and Health
 EDUC 206 Education and Society: Ideals and Realities
 EDUC 302 Researching Development: Opportunities and Risks in Adolescence
 EDUC 315 Educating for Diversity
 EDUC 339 Globalisation, Social Justice and Education

Electrical and Electronic Engineering

ENEL 198 Electrical Workshop Course
 ENEL 199 Basic Workshop Course
 ENEL 200 Electrical and Computer Engineering Design
 ENEL 220 Circuits and Signals
 ENEL 270 Principles of Electronics and Devices
 ENEL 280 Principles of Electrical Systems
 ENEL 290 Waves and Materials in Electrical Engineering
 ENEL 300 Electrical and Computer Engineering Design 2
 ENEL 301 Fundamentals of Engineering Economics and Management

ENEL 320 Signals and Communications
 ENEL 321 Control Systems
 ENEL 372 Power and Analogue Electronics
 ENEL 373 Digital Electronics and Devices
 ENEL 382 Electric Power and Machines
 ENEL 400 Computer Engineering Research Project
 ENEL 420 Advanced Signals
 ENEL 422 Communications Engineering
 ENEL 441 Special Topic
 ENEL 442 Special Topic in Electrical and Electronic Engineering
 ENEL 443 Independent Course of Study
 ENEL 471 Power Electronics 2
 ENEL 480 Electrical Power Systems
 ENEL 481 Electrical Machines
 ENEL 491 Nano Engineered Electronic Devices

Engineering

ENGR 100 Academic Writing Assessment
 ENGR 101 Foundations of Engineering
 ENGR 102 Engineering Mechanics
 ENGR 200 Engineering Work Experience
 ENGR 210 Independent Course of Study
 ENGR 211 Special Topic in Engineering
 ENGR 212 Special Topic in Engineering
 ENGR 301 Special Topic in Engineering
 ENGR 303 Special Topic in Engineering
 ENGR 304 Independent Course of Study
 ENGR 310 Independent Course of Study
 ENGR 315 Humanitarian Engineering Practice
 ENGR 401 Computational Fluid Dynamics
 ENGR 402 Special Topic: Rocket Systems Design and Control
 ENGR 403 Fire Engineering
 ENGR 404 Renewable Energy Technologies and Management
 ENGR 405 Industrial Pollution Control
 ENGR 407 Bioprocess Engineering 1
 ENGR 410 Independent Course of Study
 ENGR 476 Independent Course of Study
 ENGR 477 Independent Course of Study

Engineering Geology

ENGE 417 Foundations of Engineering Geology

Engineering Mathematics

EMTH 110 Engineering Mathematics Tutorial
 EMTH 118 Engineering Mathematics 1A
 EMTH 119 Engineering Mathematics 1B
 EMTH 171 Mathematical Modelling and Computation
 EMTH 210 Engineering Mathematics 2
 EMTH 211 Engineering Linear Algebra and Statistics
 EMTH 271 Mathematical Modelling and Computation 2
 EMTH 410 Special Topic in Engineering Mathematics
 EMTH 411 Special Topic in Engineering Mathematics
 EMTH 413 Special Topic in Engineering Mathematics
 EMTH 414 Special Topic in Engineering Mathematics
 EMTH 415 Special Topic in Engineering Mathematics

English

ENGL 102 Great Works
 ENGL 107 Shakespeare
 ENGL 117 Writing for Academic Success
 ENGL 118 Creative Writing: Skills, Techniques and Strategies
 WRIT 101 Writing for Academic Success
 ENGL 201 The Essay and Beyond: Creative Non-Fiction
 ENGL 206 Science, Technology and Literature
 ENGL 210 Inventing New Zealand in Literature
 ENGL 213 Children’s Classics: Popular Children’s Texts and their Representation on Film
 ENGL 220 Creative Writing: Short Fiction
 ENGL 232 Cultural Politics/ Cultural Activism
 ENGL 243 From Bambi to Kong: The Animal in Popular Culture
 ENGL 252 Crime Stories
 ENGL 305 European Novels and Film Adaptations
 ENGL 306 Science, Technology and Literature
 ENGL 332 Sexualities in Culture
 ENGL 333 The Exotic
 ENGL 345 Reading Digitally: Electronic Texts in Literary Culture
 ENGL 349 From Bambi to Kong: The Animal in Popular Culture
 ENGL 352 Crime Stories

English Language

ENLA 101 The English Language
 ENLA 102 Language and Society in New Zealand and Beyond
 ENLA 310 New Zealand English

Environmental Science

ENVR 101 Introduction to Environmental Science
 ENVR 201 Environmental Science and Practice
 ENVR 301 Environmental Science: Cities and Coasts
 ENVR 356 Field-focused Research Methods in Environmental Science

European and European Union Studies

EURA 101 Global Europe
 EURA 104 European Languages in Europe and Beyond
 EURA 201 European Identity and Culture: Multicultural Societies of Europe and the European Union
 EURA 204 European Novels and Film Adaptations
 EURA 210 European Integration from Community to Union
 EURA 223 The EU, Globalization and Migration
 EURA 224 Democratic and Economic Evolution of Europe
 EURA 226 The Rise and Fall of Communism in Central and Eastern Europe, 1944–1991
 EURA 234 Special Topic: European Foreign and Security Policy in the 21st Century
 EURA 235 Tsardom to Empire: Russian History 1480 to 1917
 EURA 301 European Identity and Culture: Multicultural Societies of Europe and the European Union
 EURA 304 European Novels and Film Adaptations
 EURA 310 European Integration from Community to Union
 EURA 326 The Rise and Fall of Communism in Central and Eastern Europe, 1944–1991
 EURA 330 Special Topic: Contemporary Policy Challenges in the European Union
 EURA 333 European Public Law
 EURA 335 Tsardom to Empire: Russian History 1480 to 1917
 EURA 339 The Economics of European Integration

Exercise Science, see Sport Coaching

Finance

FINC 101 Personal Finance
 FINC 201 Business Finance
 FINC 203 Financial Markets, Institutions and Instruments
 FINC 301 Corporate Finance Theory and Policy
 FINC 305 Financial Modelling
 FINC 308 Applied Financial Analysis and Valuation

| | | | | | | | |
|---------------------------|--|------------------|--|------------------------|---|-----------------------|---|
| FINC 311 | Investments | FREN 222 | French Language Acquisition : Intermediate B | GEOL 338 | Engineering and Mining Geology | HIST 254 | Making Imperial Britain, 1780-1914 |
| FINC 312 | Derivative Securities | FREN 311 | Banned Books and Countercultures | GEOL 339 | Special Topic | HIST 255 | Heroines in History |
| FINC 331 | Financial Economics | FREN 321 | French Language Acquisition: Advanced A | GEOL 340 | Special Topic | HIST 257 | America in Revolution and Civil War |
| FINC 344 | International Finance | FREN 322 | French Language Acquisition: Advanced B | GEOL 342 | Special Topic | HIST 262 | Māori and Indigenous Development |
| FINC 390 | Internship or Consultancy Project | | | GEOL 351 | Advanced Field Techniques | HIST 268 | Te Tiriti: The Treaty of Waitangi |
| Fine Arts | | Geography | | GEOL 352 | Advanced Field Mapping | HIST 269 | The Rise and Fall of Communism in Central and Eastern Europe, 1944-1991 |
| FINA 101 | What is Practice? | GEOG 106 | Global Environmental Change | GEOL 354 | Geodynamics and Geohazards | HIST 270 | Anzac Neighbours: Australia and New Zealand |
| FINA 102 | Communities of Practice | GEOG 109 | Physical Geography: Earth, Ocean, Atmosphere | GEOL 356 | Field-focused Research Methods | HIST 279 | Social and Cultural History of India |
| FINA 103 | Studio Practice | GEOG 110 | Human Geography: People, Process, Place | GEOL 357 | Topics in New Zealand Geology | HIST 283 | Ethnicity and History |
| Forest Engineering | | GEOG 201 | Environmental Processes: Principles and Applications | German | | HIST 285 | The Irish Revolution, 1916-1923: Violence and Memory |
| FORE 199 | Workshop Training Course | GEOG 202 | Globalisation and New Geographies | GRMN 151 | Elementary German Language A | HIST 288 | Exploring the Past: Museums, Memory and Material Culture |
| ENFO 204 | Forest Measurement | GEOG 205 | Introduction to Geographic Information Systems and Science | GRMN 152 | Elementary German Language B | HIST 292 | Oral Traditions and Modern Histories of Ngāi Tahu |
| ENFO 327 | Wood Science | GEOG 206 | Resource and Environmental Management | GRMN 251 | Intermediate German Language A | HIST 293 | Fascism and the Far-Right in Europe |
| ENFO 410 | Forest Engineering Research | GEOG 208 | Remote sensing for geospatial analysis | GRMN 252 | Intermediate German Language B | HIST 295 | Crime, Criminology and Policing in Modern Europe since 1750 |
| ENFO 491 | Special Topic | GEOG 211 | Environmental Processes: Research Practice | GRMN 351 | Advanced German Language A | HIST 329 | The Rise and Fall of Communism in Central and Eastern Europe, 1944-1991 |
| ENFO 492 | Special Topic | GEOG 213 | The EU, Globalization and Migration | GRMN 352 | Advanced German Language B | HIST 335 | Tsardom to Empire: Russian History 1480 to 1917 |
| ENFO 499 | Industry Field Programme | GEOG 215 | Environmental Hazards and Disasters | Health Sciences | | HIST 339 | The First World War: Total War in Europe |
| Forestry | | GEOG 218 | Research for Resilient Environments and Communities | HLED 121 | Introduction to Health Education | HIST 352 | Kiwi Culture |
| FORE 102 | Forests and Societies | GEOG 221 | Environmental Processes: Research Practice | HLED 122 | Building Resilience | HIST 361 | Heroines in History |
| FORE 105 | Forests of the World | GEOG 223 | The EU, Globalization and Migration | HLTH 101 | Introduction to Health Studies | HIST 366 | Takahi: Colonisation |
| FORE 111 | Trees, Forests and the Environment | GEOG 225 | Environmental Hazards and Disasters | HLTH 106 | Ngā Take, Te Wero - Māori Health Issues and Opportunities | HIST 367 | Social and Cultural History of India |
| FORE 131 | Trees in the Landscape | GEOG 239 | Research for Resilient Environments and Communities | HLTH 110 | Epidemiology | HIST 373 | Renaissance and Reformation Europe |
| FORE 141 | Forest Growth and Measurements | GEOG 309 | Research for Resilient Environments and Communities | HLTH 111 | Global Health | HIST 376 | Making Imperial Britain, 1780 to 1914 |
| FORE 151 | Commercial Aspects of Forestry | GEOG 311 | Coastal Studies | HLED 221 | Models of Health Education | HIST 377 | American Revolution and Civil War |
| FORE 205 | Introduction to Forest Engineering | GEOG 312 | Snow, Ice and Climate | HLED 222 | Sexualities Education | HIST 379 | Māori and Indigenous Development |
| FORE 215 | Introduction to Forest Economics | GEOG 321 | European Integration From Community to Union | HLED 223 | Nutrition and Physical Activity | HIST 393 | Fascism and the Far-Right in Europe |
| FORE 218 | Forest Biology | GEOG 323 | Geospatial Analysis in the Social and Environmental Sciences | HLTH 201 | Health Promotion | HIST 395 | Crime, Criminology and Policing in Modern Europe since 1750 |
| FORE 219 | Introduction to Silviculture | GEOG 324 | Distributed GIS and Geoinformatics | HLTH 202 | Health and Society: Applied research for Aotearoa/New Zealand | Human Services | |
| FORE 222 | Biometry 1a | GEOG 325 | Health, Well-being and Environment | HLTH 213 | Health Systems and Policy | HSRV 101 | Introduction to Social Policy |
| FORE 224 | Biometry 1b | GEOG 351 | Rethinking Development | HLTH 214 | Environmental and Occupational Health | HSRV 102 | Introduction to Human Services and Practice in Aotearoa |
| FORE 307 | Plantation Silviculture | Geology | | HLED 321 | Health Education in Practice - INTERNSHIP | HSRV 103 | Violence in Society |
| FORE 316 | Forest Management | GEOL 111 | Planet Earth: An Introduction to Geology | HLED 322 | Critical Analysis of Contemporary Health Issues | HSRV 104 | Youth Realities |
| FORE 327 | Wood Science | GEOL 113 | GeoHazards | HLTH 301 | Evidence in Health | HSRV 201 | Communication in the Human Services |
| FORE 342 | Geospatial Science in Forest Monitoring and Management | GEOL 115 | The Dynamic Earth System | HLTH 312 | Health Planning, Implementation and Evaluation | HSRV 202 | Human Behaviour and Human Systems |
| FORE 414 | Dissertation | GEOL 237 | Special Topic | History | | HSRV 203 | Policy Debates in the Social Services |
| FORE 419 | Management Case Study | GEOL 240 | Field Studies A - Mapping | HIST 127 | American History | HSRV 204 | Culture, Indigeneity and Citizenship: Critical Debates for the Human Services |
| FORE 422 | Forest Harvest Planning | GEOL 241 | Field Studies B - Field Techniques | HIST 133 | Medieval Europe: from Rome to the Black Death | | |
| FORE 423 | Forest Transportation and Road Design | GEOL 242 | Rocks, Minerals and Ores | HIST 136 | Revolutions and Revolutionaries | | |
| FORE 426 | Forest Products Marketing and International Trade | GEOL 243 | Depositional Environments and Stratigraphy | HIST 137 | Modern World History | | |
| FORE 435 | Forest Economics 2 | GEOL 244 | Structural Geology and Global Geophysics | HIST 235 | Tsardom to Empire: Russian History 1480 to 1917 | | |
| FORE 436 | Forest Tree Breeding | GEOL 246 | Special Topic: Earth Surface Dynamics | HIST 239 | The First World War: Total War in Europe | | |
| FORE 443 | Biosecurity Risk Management | GEOL 331 | Principles of Basin Analysis | HIST 243 | Kiwi Culture | | |
| FORE 447 | Environmental Forestry | GEOL 336 | Magmatic Systems and Volcanology | HIST 253 | Renaissance and Reformation Europe | | |
| FORE 475 | Independent Course of Study | GEOL 337 | Geothermal and Ore Exploration | | | | |
| French | | | | | | | |
| FREN 120 | French Language Acquisition: Beginners (Summer) | | | | | | |
| FREN 121 | French Language Acquisition: Beginners A | | | | | | |
| FREN 122 | French Language Acquisition: Beginners B | | | | | | |
| FREN 211 | Banned Books and Countercultures | | | | | | |
| FREN 221 | French Language Acquisition : Intermediate A | | | | | | |

- HSRV 206 Child Protection Practice
 HSRV 207 Te Tiriti: The Treaty of Waitangi
 HSRV 208 Gender Sensitivity and the Human Services
 HSRV 209 Special Topic
 HSRV 210 Gender, Crime and Social Theory
 HSRV 211 Community Development: Concepts, Practice and the Dynamics of Change
 HSRV 301 Change and Human Systems
 HSRV 302 Qualitative Social Research
 HSRV 303 Women Offending and Victimisation Perspectives
 HSRV 304 Indigenous Practice
 HSRV 305 Quantitative Research Methods for the Human Services
 HSRV 306 Non-Governmental Organisations and Social Development
 HSRV 308 Gender Sensitivity and the Human Services

Information Systems

- INFO 123 Business Information Systems and Technology
 INFO 125 Introduction to Programming with Databases
 INFO 213 Object-Oriented Systems Development
 INFO 223 Business Systems Analysis
 INFO 243 Accounting Information Systems
 INFO 253 Internet Business and Technology
 INFO 260 Data Management
 INFO 263 Web Design and Development
 INFO 333 IT Risk and Security Management
 INFO 343 IT Governance and Strategy
 INFO 353 Contemporary Issues in Information Systems
 INFO 360 Business Process Management
 INFO 361 Business Intelligence and Analytics
 INFO 390 Information Systems Internship
 INFO 393 Information Systems Project Management

Innovation

- INOV 200 Opportunities: Here, There and Everywhere
 INOV 201 Will it Fly?: Feasibility Assessment of New Innovation
 INOV 202 Emerging Technologies
 INOV 290 Enterprise in Practice (Project)

Internships

Refer to individual subject lists for other internship opportunities.

- PACE 295 Internship
 PACE 395 Internship

Japanese

- JAPA 108 Introduction to Japanese Culture
 JAPA 125 Elementary Japanese A
 JAPA 126 Elementary Japanese B
 JAPA 212 Japanese Society and Culture in Film and Literature
 JAPA 214 Special Topic in Japanese Language A
 JAPA 215 Intermediate Japanese
 JAPA 216 Special Topic in Japanese Language
 JAPA 314 Independent Course of Study
 JAPA 316 Independent Course of Study
 JAPA 325 Advancing Japanese A
 JAPA 326 Advancing Japanese B

Law

- LAWS 101 Legal System: Legal Method and Institutions
 LAWS 110 Legal Foundations, Research and Writing
 LAWS 301 Equity and Trusts
 LAWS 305 Company Law
 LAWS 307 The Principles of Evidence
 LAWS 309 Child and Family Law
 LAWS 310 Relationship Property and Family Finance
 LAWS 314 Environmental Law, Policy and Society
 LAWS 322 International Human Rights
 LAWS 323 Immigration and Refugee Law
 LAWS 324 Principles of Public International Law
 LAWS 326 Treaty Settlement Negotiations
 LAWS 330 Intellectual Property Law
 LAWS 331 Commercial Law I: Sales and Consumer Law
 LAWS 332 Commercial Law II: Personal Property Security and Credit
 LAWS 335 Insolvency Law
 LAWS 338 World Trade Law
 LAWS 341 Insurance Law
 LAWS 344 Gender and the Law
 LAWS 348 Research Project
 LAWS 350 Competition Law
 LAWS 352 Selected Issues in Taxation
 LAWS 356 Special Topic: Selected Topics in Natural Resource Law
 LAWS 357 Special Topic: Financial Regulation
 LAWS 358 The Rights of Indigenous Peoples
 LAWS 359 Trial Advocacy
 LAWS 360 Jurisprudence
 LAWS 363 Individual Employment Law
 LAWS 364 Law of the Sea
 LAWS 365 Issues in Policing, Prosecution and Alternatives to Prosecution

- LAWS 366 Sentencing Theory and Practice
 LAWS 367 Special Topic: Artificial Intelligence & Law
 LAWS 368 Comparative Law: New Zealand Law in Global Context
 LAWS 373 Washington Internship
 LAWS 382 Legal Internship
 LAWS 383 Law and Medicine
 LAWS 386 Clinical Legal Studies
 LAWS 387 Advanced Public Law
 LAWS 388 European Public Law
 LAWS 390 Private International Law
 LAWS 393 Advanced Land Law
 LAWS 398 Legal Ethics

Linguistics

- LING 101 The English Language
 LING 102 Language and Society in New Zealand and Beyond
 LING 215 The Sounds of Speech
 LING 216 Systems of Words and Sounds in Language
 LING 217 Sentence Structure
 LING 219 Language Acquisition
 LING 225 Forensic Linguistics
 LING 230 Special Topics in Linguistics
 LING 306 Topics in Syntactic Theory
 LING 307 Topics in Phonetics and Phonology
 LING 310 New Zealand English

Management

- MGMT 100 Fundamentals of Management
 MGMT 170 Managerial Decision Making
 MGMT 206 Organisational Behaviour
 MGMT 207 Principles of Human Resource Management
 MGMT 221 International Business
 MGMT 223 Innovation Management
 MGMT 228 Chinese Business Practices and Culture (study tour)
 MGMT 230 Business, Society and the Environment
 MGMT 270 Introduction to Operations and Supply Chain Management
 MGMT 271 Operations Management Processes
 MGMT 281 Business Research Methods
 MGMT 301 Leading Change and Innovation
 MGMT 303 Leading and Managing People: Essential Employment Frameworks
 MGMT 304 Management Skills for a Diverse Workforce
 MGMT 306 Team Leadership
 MGMT 308 Advanced Human Resource Management
 MGMT 324 International Entrepreneurship
 MGMT 330 Communication Management
 MGMT 331 Learning and Development in Organisations
 MGMT 332 International Management
 MGMT 333 Managing Corporate Responsibility
 MGMT 335 Business and Sustainability

- MGMT 342 Entrepreneurship and New Ventures
 MGMT 343 Social Entrepreneurship
 MGMT 344 Strategic Management
 MGMT 345 Strategy Processes and Practices
 MGMT 370 Strategic Operations and Supply Chain Management
 MGMT 371 Purchasing and Supply Chain Management
 MGMT 372 Project Management
 MGMT 390 Management Intern Consulting Project

Māori and Indigenous Studies

- MAOR 107 Aotearoa: Introduction to Traditional Māori Society
 MAOR 108 Aotearoa: Introduction to New Zealand and Beyond Treaty Society
 MAOR 165 He Tīmatanga: Engaging with Māori
 MAOR 172 Science, Māori and Indigenous Knowledge
 MAOR 212 Māori and Indigenous Development
 MAOR 219 Te Tiriti: The Treaty of Waitangi
 MAOR 230 Ethnicity and History
 MAOR 268 Kiriata: Māori film and Media
 MAOR 270 Te Ao Hauora Tangata: Māori Health Perspectives
 MAOR 282 Kapa Haka - Introducing Māori Performing Arts
 MAOR 285 Oral Traditions and Modern Histories of Ngāi Tahu
 MAOR 301 Ngāti Apopo: Māori Futures
 MAOR 317 Takahi: Colonisation
 MAOR 323 Research Essay
 MAOR 373 Whakaaro Wairua: Māori Spiritual Beliefs and Philosophies

Māori Language, see Te Reo Māori

Marketing

- MKTG 100 Principles of Marketing
 MKTG 201 Marketing Management
 MKTG 202 Marketing Research
 MKTG 204 Consumer Behaviour
 MKTG 205 Services Marketing and Management
 MKTG 230 Business, Society and the Environment
 MKTG 240 Tourism, Hospitality & Events Management
 MKTG 307 Advertising and Promotion Management
 MKTG 309 International Marketing
 MKTG 310 Customer Experience
 MKTG 311 Retail Marketing
 MKTG 314 Tourism Marketing and Management
 MKTG 315 Marketing for Behavioural Change
 MKTG 316 Digital Marketing
 MKTG 317 Sustainable Tourism Enterprises and Destinations
 MKTG 390 Marketing Internship

Mathematics

| | |
|----------|---|
| MATH 101 | Methods of Mathematics |
| MATH 102 | Mathematics 1A |
| MATH 103 | Mathematics 1B |
| MATH 110 | Foundations of Applied Mathematics and Statistics |
| MATH 120 | Discrete Mathematics |
| MATH 201 | Multivariable Calculus |
| MATH 202 | Differential Equations |
| MATH 203 | Linear Algebra |
| MATH 220 | Discrete Mathematics and Cryptography |
| MATH 240 | Analysis and Groups |
| MATH 270 | Mathematical Modelling and Computation 2 |
| MATH 302 | Partial Differential Equations |
| MATH 303 | Applied Matrix Algebra |
| MATH 320 | Discrete Mathematics |
| MATH 321 | Rings and Fields |
| MATH 324 | Cryptography and Coding Theory |
| MATH 343 | Metric, Normed and Hilbert Spaces |
| MATH 353 | Computational Mathematics and Applications |
| MATH 363 | Dynamical Systems |
| MATH 365 | Applications of Complex Variables |
| MATH 380 | Mathematics in Perspective |
| MATH 391 | Special Topic |
| MATH 392 | Special Topic |
| MATH 393 | Independent Course of Study |
| MATH 394 | Independent Course of Study |
| MATH 395 | Mathematics Project |

Mechanical Engineering

| | |
|----------|--|
| ENME 199 | Workshop Training Course for Mechanical and Mechatronics Engineering |
| ENME 201 | Design Communication |
| ENME 202 | Stress, Strain and Deformation in Machine Elements |
| ENME 203 | Dynamics and Vibrations |
| ENME 207 | Materials Science and Engineering |
| ENME 215 | Engineering Thermodynamics |
| ENME 221 | Engineering Design and Manufacture |
| ENME 299 | Independent course of Study |
| ENME 301 | Engineering Design and Production Quality |
| ENME 302 | Computational and Applied Mechanical Analysis |
| ENME 303 | Controls and Vibrations |
| ENME 307 | Performance of Engineering Materials |
| ENME 311 | Engineering Design and Production Management |
| ENME 313 | Electro Technology for Mechanical Engineers |
| ENME 314 | Fluid Mechanics |
| ENME 315 | Heat Transfer |
| ENME 396 | Independent Course of Study |
| ENGR 401 | Computational Fluid Dynamics |

| | |
|----------|---|
| ENME 401 | Mechanical Systems Design |
| ENME 403 | Linear Systems Control and System Identification |
| ENME 404 | Aerodynamics and Ground Vehicle Dynamics |
| ENME 405 | Energy Systems Engineering |
| ENME 406 | Engineering Product Design and Analysis |
| ENME 408 | Honours Research and Development Project |
| ENME 409 | Physiological Modelling |
| ENME 411 | Advanced Mechanical System Design |
| ENME 412 | Advanced Vibrations |
| ENME 418 | Engineering Management and Professional Practice for Mechanical Engineers |
| ENME 446 | Independent Course of Study |
| ENME 480 | Independent Course of Study |
| ENME 481 | Special Topic: Failure Processes and Analysis |
| ENME 482 | Independent Course of Study |
| ENME 483 | Special Topic |
| ENME 484 | Special Topic: HVAC Engineering |
| ENME 485 | Special Topic: Propulsion |

Mechatronics Engineering

| | |
|----------|---|
| ENMT 201 | Mechatronics Design |
| ENMT 301 | Mechatronics System Design |
| ENMT 401 | Mechatronics Honours Research and Development Project |
| ENMT 482 | Robotics |

Media and Communication

| | |
|----------|--|
| COMS 101 | Media and Society |
| COMS 102 | Introduction to News and Journalism |
| COMS 104 | Introduction to Strategic Communication |
| COMS 201 | Media Audiences |
| COMS 204 | Advertising and Cultural Consumption |
| COMS 205 | Media and Politics |
| COMS 207 | Social Media and Public Life |
| COMS 225 | Politics and New Media |
| COMS 304 | Journalists at Work |
| COMS 306 | Media and Conflict |
| COMS 307 | Broadcasting Aotearoa New Zealand: Online and On Air |
| COMS 320 | Strategic Campaign Development |

Music

| | |
|----------|--------------------------------------|
| MUSA 100 | Essentials in Music Techniques |
| MUSA 101 | Musicianship, Harmony and Analysis 1 |
| MUSA 120 | Song Writing 1 |
| MUSA 121 | Notated Composition 1A |
| MUSA 122 | Notated Composition 1B |
| MUSA 125 | Music Technologies |
| MUSA 131 | Organum to Autotune |
| MUSA 141 | Performance Major 1A |
| MUSA 142 | Performance Major 1B |
| MUSA 143 | Performance (Non-Major) 1 |

| | |
|----------|---|
| MUSA 150 | Music in Aotearoa New Zealand |
| MUSA 151 | The Music Industry |
| MUSA 152 | Acoustics and Recording Techniques |
| MUSA 190 | Chamber Choir 1 |
| MUSA 193 | Ensemble 1 |
| MUSA 200 | Musicianship, Harmony and Analysis 2 |
| MUSA 201 | Harmony and Score-Reading |
| MUSA 221 | Notated Composition 2A |
| MUSA 222 | Notated Composition 2B |
| MUSA 224 | Orchestration, Arrangement and Remixing |
| MUSA 226 | The Computer as a Musical Tool |
| MUSA 232 | Musics of the World |
| MUSA 234 | Contemporary Music |
| MUSA 236 | Hip Hop Revolution |
| MUSA 241 | Performance Major 2A |
| MUSA 242 | Performance Major 2B |
| MUSA 243 | Performance (Non-Major) 2 |
| MUSA 244 | The Art of Accompaniment |
| MUSA 250 | Music in our Community |
| MUSA 252 | Kapa Haka - Introducing Māori Performing Arts |
| MUSA 290 | Chamber Choir 2 |
| MUSA 293 | Ensemble 2 |
| MUSA 320 | Conducting |
| MUSA 321 | Composition 3A |
| MUSA 322 | Composition 3B |
| MUSA 332 | Musics of the World |
| MUSA 334 | Contemporary Music |
| MUSA 335 | Philosophy of Music |
| MUSA 341 | Performance Major 3A |
| MUSA 342 | Performance Major 3B |
| MUSA 390 | Chamber Choir 3 |
| MUSA 393 | Ensemble 3 |
| MUSA 396 | Internship |
| MUSA 397 | Collaborative Group Project |

Natural Resources Engineering

| | |
|----------|--|
| ENCN 201 | Communication Skills Portfolio 1 |
| ENCN 213 | Design Studio 1 |
| ENCN 221 | Engineering Materials |
| ENCN 231 | Solid Mechanics |
| ENCN 242 | Fluid Mechanics and Hydrology |
| ENCN 253 | Soil Mechanics |
| ENCN 261 | Transport and Surveying |
| ENCN 281 | Environmental Engineering |
| ENCN 301 | Communication Skills Portfolio 2 |
| ENCN 304 | Deterministic Mathematical Methods |
| ENCN 305 | Programming, Statistics and Optimization |
| ENCN 342 | Fluid Mechanics and Hydraulics |
| ENCN 353 | Geotechnical Engineering |
| ENCN 371 | Project and Infrastructure Management |
| ENNR 320 | Integrated Catchment Analysis |
| ENNR 322 | Ecological Engineering |
| ENCN 401 | Engineering in Developing Communities |
| ENCN 412 | Traffic Engineering |
| ENCN 415 | Pavement Engineering |

| | |
|----------|--|
| ENCN 444 | Water Infrastructure and Design |
| ENCN 445 | Environmental Fluid Mechanics |
| ENCN 452 | Advanced Geotechnical Engineering |
| ENCN 454 | Geotechnical Earthquake Engineering |
| ENCN 470 | Professional Engineering Development |
| ENCN 481 | Environmental Engineering Design Project |
| ENCN 493 | Fire Engineering |
| ENNR 405 | Ecological and Bioresources Engineering |
| ENNR 422 | Water Resources and Irrigation Engineering |
| ENNR 423 | Sustainable Energy Systems |

Pacific Studies

| | |
|----------|---|
| PACS 102 | Aotearoa: Introduction to Traditional Māori Society |
| PACE 395 | Internship |
| PACS 303 | International Politics: New Zealand Foreign Policy |

Philosophy

| | |
|----------|--|
| PHIL 110 | Science: Good, Bad, and Bogus |
| PHIL 132 | God, Mind, and Freedom |
| PHIL 133 | Philosophy and Human Nature |
| PHIL 136 | Ethics Today |
| PHIL 137 | Computers, Artificial Intelligence, and the Information Society |
| PHIL 138 | Logic and Critical Thinking |
| PHIL 139 | Ethics, Politics and Justice |
| PHIL 203 | Dinosaurs, Quarks and Quasars: The Philosophy of Science |
| PHIL 208 | The Brain Gym: An Introduction to Logic |
| PHIL 229 | Philosophy of Religion: Rationality, Science, and the God Hypothesis |
| PHIL 233 | Epistemology and Metaphysics |
| PHIL 235 | Cyberspace, Cyborgs, and the Meaning of Life |
| PHIL 236 | Ethics |
| PHIL 240 | Bioethics: Life, Death, and Medicine |
| PACE 395 | Internship |
| PHIL 303 | Quarks, Quasars and Dinosaurs: The Philosophy of Science |
| PHIL 308 | The Brain Gym: An Introduction to Logic |
| PHIL 310 | History of Philosophy |
| PHIL 318 | Philosophy of Religion: Rationality, Science, and the God Hypothesis |
| PHIL 321 | Ethics |
| PHIL 324 | Bioethics: Life, Death, and Medicine |
| PHIL 328 | Independent Course of Study |
| PHIL 335 | Cyberspace, Cyborgs and the Meaning of Life |

Physical Education, see Sport Coaching

Physics

| | |
|----------|---|
| PHYS 101 | Engineering Physics A: Mechanics, Waves, Electromagnetism and Thermal Physics |
| PHYS 102 | Engineering Physics B: Electromagnetism, Modern Physics and 'How Things Work' |
| PHYS 111 | Introductory Physics for Physical Sciences and Engineering |
| PHYS 203 | Relativistic and Quantum Physics |
| PHYS 205 | Waves, Optics and Mechanics |
| PHYS 206 | Electromagnetism and Materials |
| PHYS 208 | Special Topic |
| PHYS 209 | Special Topic |
| PHYS 285 | Technical and Professional Skills for Physicists |
| PHYS 310 | Thermal, Statistical and Particle Physics |
| PHYS 311 | Quantum Mechanics |
| PHYS 313 | Advanced Electromagnetism and Materials |
| PHYS 319 | Atmospheric, Oceanic and Climate Dynamics |
| PHYS 323 | Laser Physics and Modern Optics |
| PHYS 326 | Classical Mechanics and Symmetry Principles |
| PHYS 327 | Special Topic |
| PHYS 328 | Special Topic |
| PHYS 329 | Special Topic: Physics in Industry Project |
| PHYS 381 | Advanced Experimental Physics and Astronomy |
| PHYS 391 | Introductory Physics Research |

Political Science and International Relations

| | |
|----------|--|
| POLS 102 | Politics: An Introduction |
| POLS 103 | Introduction to New Zealand Politics and Policy |
| POLS 104 | Introduction to International Relations |
| POLS 105 | Comparing the Politics of Nations: A Global Introduction |
| POLS 106 | Plato to Nato: Introduction to Political Thought |
| POLS 202 | International Relations and Humanitarian Ideals |
| POLS 205 | United States Politics |
| POLS 209 | Special Topic: International Development Studies |
| POLS 210 | Democratic Uprisings and Political Participation |
| POLS 211 | China from Mao to Now |
| POLS 212 | Global and International Political Economy |
| POLS 216 | City Politics and Urban Policy |
| POLS 224 | Democratic and Economic Evolution of Europe |
| POLS 232 | Media and Politics |

| | |
|----------|---|
| POLS 234 | Special Topic: European Foreign and Security Policy in the 21st Century |
| PACE 395 | Internship |
| POLS 301 | Contemporary Political Theory |
| POLS 304 | Environmental Politics and Policy |
| POLS 307 | Policy Issues in Science, Technology and Global Health |
| POLS 308 | International Politics: New Zealand Foreign Policy |
| POLS 314 | Militaries and Societies |
| POLS 332 | Media and Conflict |
| POLS 358 | Ngati Apopo: Māori Futures |

Product Design

| | |
|----------|--|
| PROD 101 | Product Design 1 |
| PROD 110 | Product Design Principles |
| PROD 111 | Materials Science for Design |
| PROD 121 | The Game Development Process |
| PROD 211 | Materials Engineering and Selection |
| PROD 212 | Thermofluids |
| PROD 213 | Industrial Product Design 1A |
| PROD 214 | Industrial Product Design 1B |
| PROD 221 | Game Design in Context |
| PROD 222 | Gaming Project Studio 1 |
| PROD 223 | Immersive Game Design |
| PROD 224 | Gaming Mathematics and Statistics |
| PROD 231 | Product Formulation 1 |
| PROD 232 | Natural Products Properties and Production |
| PROD 233 | Chemical and Healthcare Product Formulation 1A |
| PROD 234 | Chemical and Healthcare Product Formulation 1B |

Professional and Community Engagement

| | |
|----------|-----------------------------|
| PACE 195 | Putting Your Degree to Work |
| PACE 295 | Internship |
| PACE 395 | Internship |

Psychology

| | |
|----------|---|
| PSYC 105 | Introductory Psychology - Brain, Behaviour and Cognition |
| PSYC 106 | Introductory Psychology - Social, Personality and Developmental |
| PSYC 206 | Research Design and Statistics |
| PSYC 207 | Developmental Psychology |
| PSYC 208 | Cognition |
| PSYC 209 | Sensation and Perception |
| PSYC 211 | Personality |
| PSYC 213 | Introduction to Social Psychology |
| PACE 395 | Internship |
| PSYC 333 | Biological Psychology |
| PSYC 335 | Abnormal Psychology |
| PSYC 336 | Industrial and Organisational Psychology |
| PSYC 339 | Health Psychology and Behaviour Change |

| | |
|----------|---|
| PSYC 340 | Cognitive Psychology |
| PSYC 342 | Special Topic |
| PSYC 344 | Research Methods |
| PSYC 346 | Judgement and Decision Making |
| PSYC 348 | Special Topic: Contemporary Issues in Family Psychology |
| PSYC 349 | Special Topic |

Russian

| | |
|----------|---|
| RUSS 130 | Elementary Russian Language A |
| RUSS 131 | Elementary Russian Language B |
| RUSS 230 | Intermediate Russian Language A |
| RUSS 231 | Intermediate Russian Language B |
| RUSS 235 | Tsardom to Empire: Russian History 1480 to 1917 |
| PACE 395 | Internship |
| RUSS 330 | Advanced Russian Language A |
| RUSS 331 | Advanced Russian Language B |
| RUSS 335 | Tsardom to Empire: Russian History 1480 to 1917 |

Science

| | |
|----------|-------------------------|
| SCIE 101 | Science, Society and Me |
|----------|-------------------------|

Science, Māori and Indigenous Knowledge

| | |
|----------|---|
| SCIM 101 | Science, Māori and Indigenous Knowledge |
|----------|---|

Social Work

| | |
|----------|---|
| SOWK 101 | Introduction to Social Policy |
| SOWK 102 | Human Services in Aotearoa |
| SOWK 104 | Youth Realities |
| SOWK 201 | Communication in the Human Services |
| SOWK 202 | Human Behaviour and Human Systems |
| SOWK 203 | Policy Debates in the Social Services |
| SOWK 301 | Theory, Methods and Integration |
| SOWK 303 | Mental Health |
| SOWK 304 | Indigenous Practice |
| SOWK 308 | Social Work Principles and Skills |
| SOWK 309 | Law, Society and International Social Work Practice |
| SOWK 310 | Research Methods in Social Work |
| SOWK 451 | Social Work Practice Integration |
| SOWK 456 | Research Project |
| SOWK 471 | Social Work Practicum I |
| SOWK 472 | Social Work Practicum II |

Sociology

| | |
|----------|---|
| SOCI 111 | Exploring Society |
| SOCI 112 | Global Society |
| SOCI 201 | Social Theory for Contemporary Life |
| SOCI 202 | Constructing Bodies |
| SOCI 209 | Te Tiriti: The Treaty of Waitangi |
| SOCI 212 | Kinship and Family in Comparative Perspective |

| | |
|----------|--|
| SOCI 218 | Crime and Justice |
| SOCI 220 | Environment and Society |
| SOCI 223 | Ethnicity and History |
| SOCI 238 | Exploring the Past: Museums, Memory and Material Culture |
| SOCI 243 | Sociology of Health and Medicine |
| SOCI 244 | On Death and Dying: Current Controversies in Thanatology |
| SOCI 255 | Sociology of the City |
| SOCI 263 | Sociology of the Everyday World |
| SOCI 278 | Religion and Society: Why God Won't Die |
| SOCI 293 | The History of Gangs in New Zealand |
| SOCI 344 | On Death and Dying: Current Controversies in thanatology |
| SOCI 355 | Sociology of the City |
| SOCI 358 | Prisons and Corrections |
| SOCI 361 | Social Movements |
| SOCI 363 | Investigating Social Worlds |
| SOCI 368 | The Politics of Need: Globalisation, Poverty and Welfare Provision |
| SOCI 388 | Contested Heritage: Politics, Power and Practice |

Software Engineering

| | |
|----------|--|
| SENG 199 | Software Engineering Workshop Training Course |
| SENG 201 | Software Engineering I |
| SENG 202 | Software Engineering Project Workshop |
| SENG 301 | Software Engineering II |
| SENG 302 | Software Engineering Group Project |
| SENG 365 | Web Computing Architectures |
| SENG 401 | Software Engineering III |
| SENG 402 | Software Engineering Research Project |
| SENG 403 | Software Process and Product Quality |
| SENG 404 | Software Requirements and Architecture |
| SENG 440 | Special Topic: Topics in Mobile Computing |
| SENG 441 | Special Topic: Model-Driven Software Engineering |

Soil Science

| | |
|----------|----------------|
| SOIL 203 | Soil Fertility |
|----------|----------------|

Spanish

| | |
|----------|---|
| SPAN 101 | Beginners' Spanish A |
| SPAN 102 | Beginners' Spanish B |
| SPAN 201 | Intermediate Spanish Language A |
| SPAN 202 | Intermediate Spanish Language B |
| SPAN 203 | Spanish Conversation and Pronunciation |
| SPAN 205 | Journey through Hispanic Civilisation and Culture |
| PACE 395 | Internship |
| SPAN 301 | Advanced Spanish A |
| SPAN 302 | Advanced Spanish B |
| SPAN 305 | Journey Through Hispanic Civilisation and Culture |

Speech and Language Pathology, see Communication Disorders

Sport Coaching

| | |
|----------|--|
| SPCO 101 | Introduction to Sport Coaching |
| SPCO 102 | Theoretical Foundations of Coaching and Teaching |
| SPCO 103 | Sport Psychology 1 |
| SPCO 104 | Anatomy and Physiology |
| SPCO 105 | Social History of Sport and Physical Education |
| SPCO 107 | Sport Nutrition |
| SPCO 110 | Practicum 1 |
| SPCO 126 | Land Journeys and Ethics |
| SPCO 201 | Athlete-Centred Coaching 1 |
| SPCO 204 | Biomechanics |
| SPCO 207 | Ethics in Sport |
| SPCO 208 | Sport and Culture in New Zealand |
| SPCO 209 | Exercise Physiology |
| SPCO 210 | Practicum 2 |
| SPCO 221 | Sports Injuries and their Management |
| SPCO 223 | Applied Sport Psychology |
| SPCO 224 | Sport Management |
| SPCO 226 | Rock Climbing Contexts and Techniques |
| SPCO 227 | Paddle Sport Contexts and Techniques |
| SPCO 231 | Introduction to Performance Analysis |
| SPCO 241 | Introduction to Strength and Conditioning |
| SPCO 242 | Weight Management |
| SPCO 301 | Sport Coaching and Leadership |
| SPCO 302 | Athlete-Centred Coaching 2 |
| SPCO 304 | Applied Biomechanics |
| SPCO 305 | Sociology of Sport |
| SPCO 308 | Athletes with Disabilities |
| SPCO 309 | Applied Exercise Physiology |
| SPCO 310 | Practicum 3 |
| SPCO 320 | Internship |
| SPCO 326 | Rock Climbing Leadership |
| SPCO 331 | Performance Analysis 2: Tools and Techniques |
| SPCO 332 | Applied Performance Analysis |
| SPCO 341 | Strength and Conditioning for Sports Performance |
| SPCO 343 | Nutrition and Recovery for Sports Performance |

Statistics

| | |
|----------|---|
| STAT 101 | Statistics 1 |
| STAT 201 | Applied Statistics |
| STAT 202 | Regression Modelling |
| STAT 211 | Random Processes |
| STAT 213 | Statistical Inference |
| STAT 221 | Introduction to Statistical Computing Using R |
| STAT 312 | Data Collection and Sampling Methods |
| STAT 313 | Computational Statistics |
| STAT 314 | Bayesian Inference |
| STAT 315 | Multivariate Statistical Methods |
| STAT 317 | Time Series Methods |
| STAT 318 | Data Mining |
| STAT 319 | Generalised Linear Models |

| | |
|----------|-----------------------------|
| STAT 391 | Special Topic |
| STAT 392 | Special Topic |
| STAT 393 | Independent Course of Study |
| STAT 394 | Independent Course of Study |
| STAT 395 | Statistics Project |

Teacher Education

Not all Teacher Education courses are available to Study Abroad students. Contact the International Relationships Office for information on available courses.

| | |
|----------|---|
| TECE 105 | Integrated Curriculum/Ako and Whanaungatanga |
| TECE 106 | Rethinking Infants and Toddlers/Te Kohungahunga |
| TECE 205 | Negotiated Curriculum: The Multiple Languages of Children |
| TECE 355 | Social and Cultural Studies 1 |
| TECE 356 | Social and Cultural Studies 2 |
| TECE 357 | The Early Childhood Context 1 |
| TECE 358 | The Early Childhood Context 2 |
| TECE 359 | Te Reo me nga Tikanga Māori |
| TECM 101 | Te Reo me nga Ahuatanga Māori 1 |
| TECM 201 | Te reo me nga Ahuatanga Māori 2 |
| TECM 301 | Te Reo me nga Ahuatanga Māori 3 |
| TECP 112 | Theoretical Foundations of Literacy |
| TECP 113 | The Arts in the NZ Curriculum |
| TECP 122 | Introduction to Mathematics Education |
| TECP 202 | Language, Social and Cultural Studies |
| TECP 212 | Effective Classroom Practices in Literacy and Mathematics |
| TECP 222 | Health and Physical Education Curriculum |
| TECP 223 | Science and Technology Education: Nature and Practice |
| TECP 313 | Literacy and Mathematics Education for All |
| TECP 315 | Language, Culture and Identity: Enhancing Educational Experiences and Outcomes for Diverse Learners |
| TECP 316 | Te Ao Māori/Matauranga Māori: Teaching and Learning from Māori Worldviews |
| TECP 317 | e-Learning for Transformative Education |
| TECP 318 | Research and Inquiry in Action |
| TECP 319 | Sustainability and Social Justice |
| TECP 331 | English Literacy and Mathematics Education 1 |
| TECP 332 | English Literacy and Mathematics Education 2 |

| | |
|----------|---|
| TECP 333 | Future Focussed Education: Science, Technology, Digital Literacy |
| TECP 334 | Community-Based Approaches in Education: Health, Physical Education and Social Sciences |
| TECP 335 | Creative Action and Response in Education: The Arts |
| TECS 395 | Specialist Curriculum Studies Years 7-13 |
| TECS 396 | Additional Curriculum Subject Years 7-10 (1) |
| TECS 397 | Additional Curriculum Subject Years 11-13 |
| TECS 398 | Additional Curriculum Subject Years 7-10 (2) |
| TEDU 105 | Cultural Studies/Te Tirohanga Ahurea |
| TEDU 110 | Child and Adolescent Development |
| TEDU 111 | Education, Culture and Society |
| TEDU 201 | Teaching, Learning and Assessment |
| TEDU 206 | Inclusive Education in Early Childhood/Te Aoturoa Tataki |
| TEDU 301 | Inclusive and Special Education |
| TEDU 305 | Discovering Early Years Education |
| TEPI 101 | The Profession of Teaching |
| TEPI 105 | Teacher Identity/Ngā Tirohanga Whanui |
| TEPI 205 | Professional Responsibilities and Relationships/Ngā Tirohanga Whanui |
| TEPI 206 | The Teacher's Role in Numeracy and Literacy/ Ngā Tirohanga Whanui |
| TEPI 222 | Professional Inquiry: Designing for Learning |
| TEPI 230 | Informing Teaching and Learning through Community Engagement |
| TEPI 305 | The Teacher's Role in Learning and Assessment/Ngā Tirohanga Whanui |
| TEPI 306 | The Pedagogical Threads of Teaching/Te Umanga Ako - Tuia! |
| TEPI 320 | Professional Inquiry and Te reo me nga Ahuatanga Māori 3A |
| TEPI 321 | Professional Inquiry and Te reo me nga Ahuatanga Māori 3B |
| TEPI 331 | Professional and Educational Studies 1 |
| TEPI 332 | Professional and Educational Studies 2 |
| TEPI 333 | Nga Ahuatanga Māori and Learning Languages |
| TEPI 351 | Professional Inquiry 1 |
| TEPI 352 | Professional Inquiry 2 |
| TEPI 370 | Professional and Educational Studies 1 |
| TEPI 371 | Professional and Educational Studies 2 |
| TEPI 399 | Nga rautaki whakaako reo me nga tikanga |

| | |
|----------|--|
| TEPP 102 | The Profession of Teaching: Understanding Learning |
| TEPP 152 | Professional Practice 1 |
| TEPP 206 | Professional Practice: Focus on Numeracy and Literacy |
| TEPP 221 | Professional Practice: Organising for Learning |
| TEPP 252 | Professional Practice 2 |
| TEPP 305 | Professional Practice: Assessment and Planning |
| TEPP 306 | Professional Practice: Pedagogical Threads |
| TEPP 320 | Professional Practice: Understanding Myself as a Teacher |
| TEPP 321 | Professional Practice: Being a Teacher |
| TEPP 331 | Professional Practice 1 |
| TEPP 332 | Professional Practice 2 |
| TEPP 352 | Professional Practice 3 |
| TEPP 370 | Teaching Practice 1 |
| TEPP 371 | Teaching Practice 2 |

Te Reo Māori (Māori language)

| | |
|----------|---|
| TREO 110 | Conversational Māori for Absolute Beginners |
| TREO 111 | Te Reo: Te Kakano - Introductory Language 1 |
| TREO 112 | Te Reo: Te Kakano - Introductory Language 2 |
| TREO 260 | Te Reo: Te Pihinga - Intermediate Language |
| TREO 282 | Kapa Haka - Introducing Māori Performing Arts |
| PACE 395 | Internship |
| TREO 323 | Tuhinga Rangahau |
| TREO 360 | Te Reo: Te Mahuri: Advanced Māori Language |

Water Resource Management

| | |
|----------|---------------------------------|
| WATR 201 | Freshwater Resources |
| WATR 203 | Freshwater Science Field Skills |
| WATR 301 | Water Resource Management |

Writing

| | |
|----------|------------------------------|
| WRIT 101 | Writing for Academic Success |
|----------|------------------------------|

Youth and Community Leadership*

| | |
|----------|----------------------------------|
| YACL 101 | Introduction to Youth Leadership |
|----------|----------------------------------|

** This new course area is subject to Universities New Zealand CUAP approval, due July 2019.*

Plan your study



UC offers undergraduate courses in the following subjects:

| | | |
|----------------------------------|---------------------------------------|---|
| Accounting | Electrical and Electronic Engineering | Marketing |
| Antarctic Studies | Engineering | Mathematics |
| Ancient Greek | English | Mechanical Engineering |
| Anthropology | English Language | Mechatronics Engineering |
| Art History and Theory | Entrepreneurship | Media and Communication |
| Astronomy | Environmental Science | Music |
| Biochemistry | European and European Union Studies | Natural Resources Engineering |
| Biological Sciences | Finance | Operations and Supply Chain Management |
| Biosecurity | Financial Engineering | Philosophy |
| Biotechnology | Forest Engineering | Physics |
| Business Economics | Forestry | Political Science and International Relations |
| Business and Sustainability | French | Product Design |
| Chemical and Process Engineering | Geography | Professional and Community Engagement |
| Chemistry | Geology | Psychology |
| Chinese | German | Russian |
| Cinema Studies | Health Sciences | Social Work |
| Civil Engineering | History | Sociology |
| Classics | Human Resource Management | Software Engineering |
| Computer Engineering | Human Services | Spanish |
| Computer Science | Information Systems | Speech and Language Pathology |
| Criminal Justice | Innovation | Sport Coaching (includes Exercise Science and Physical Education) |
| Cultural Studies | Japanese | Statistics |
| Data Science | Latin | Strategy and Entrepreneurship |
| Digital Humanities | Law | Taxation and Accounting |
| Ecology | Linguistics | Te Reo Māori (Māori language) |
| Economics | Management | Tourism Management and Marketing |
| Education | Māori and Indigenous Studies | Youth and Community Leadership |



‘Everyone is so laid back and easy going and I love this about New Zealand. You really get to know lecturers on a personal level and develop a connection with them.’

Laura Schnelle
Germany



Students conducting an experiment in Ilam Stream, Christchurch. This waterway runs through the middle of the UC campus.



150+

external business mentors
engaged in 2018

Learning through experience

Keen to go beyond the classroom as part of your Study Abroad semester? As a UC Student, you'll have a once-in-a-lifetime opportunity to gain community service or work experience, and engage in hands-on field study.

Internships at UC

Apply your analytical skills to a real-world internship course, PACE 295.*

Internship students work with a local organisation or business on a special project, under the supervision of a specialist lecturer.

Work can be completed throughout the semester and each project has measurable milestones.

Past interns have worked in areas as diverse as food sustainability, GIS mapping, film-making, social entrepreneurship, media and communications, and much more.

Enterprise in Practice

INOV 290* is a for-credit course that allows students to complete a project for a start-up venture, local business, social enterprise, or a student club. This project will enable you to apply your academic skills and knowledge to a practical project.

The course is taught from and supported by the staff at the Centre for Entrepreneurship (UCE), which also offers mentoring, seminars, and development bootcamps to students, to encourage entrepreneurial discovery and experimentation.

*See www.canterbury.ac.nz/courses for details of individual courses.



‘Returning to Christchurch to speak at the Community Engagement Summit really made my semester at UC come full circle. From taking CHCH 101, to starting my own volunteer efforts, to then sharing my experience so others could be inspired, was incredibly rewarding.’

Jessica Weston
USA

Comet McNaught from the Mt John Observatory, Lake Tekapo. The dome is the 0.6m OC (Optical Telescope). The observatory is run by the UC School of Physical and Chemical Sciences, and is for the use of staff and students.



Service learning and Community Engagement

CHCH 101: Strengthening Communities through Social Innovation* is a for-credit course, incorporating service learning.

Building on the community spirit of the famous Student Volunteer Army (UC SVA), you'll complete up to 20 hours of community service related to social innovation and volunteerism in the Christchurch community.

As well as providing you with a course experience not available anywhere else in the world, CHCH 101 is a great opportunity to get to know New Zealand students and community members.

Get hands-on with applied learning

UC's connections with local businesses means that many of our semester courses offer exciting off-campus experiences and applied learning.

Field study

Ocean, rivers, mountains, glaciers, and indigenous and exotic forests are all readily accessible for hands-on learning.

The diversity of geography contained in a relatively small area acts as a natural laboratory for off-campus study, and makes UC an ideal option for students wishing to undertake Science field study.

UC operates an extensive network of field stations around the South Island, offering unparalleled access to New Zealand's flora and fauna, geology, and marine life.

Field trips are also a key component of courses as diverse as Māori and Indigenous Studies, Political Science and International Relations, and Sport Coaching.

More information

E: ucmobility@canterbury.ac.nz
www.canterbury.ac.nz/study/study-abroad-and-exchange/study-abroad

AT A GLANCE

1st New Zealand university to receive the prestigious QS 5 Star rating for internationally renowned research and training

95% of UC's 2018 graduates chose innovation, entrepreneurship, work, or community-engaged learning in their study

100+ different subjects are offered from science to the arts

Guaranteed housing in a supportive, fun environment



UC offers excellent housing options to ensure you make the most of your Kiwi experience.

UC Accommodation Student Village Study Abroad package

To make your housing arrangements as easy and stress-free as possible, the UC Accommodation Student Village has put together a package specifically for students applying for the University-approved Study Abroad or Exchange programme.

On-campus housing is guaranteed for applications received by **1 December** for a Semester 1 (February) 2020 start, or by **1 May** for a Semester 2 (July) 2020 start.

Applications received after these dates are subject to availability.

Accommodation is provided in modern self-catered apartments just a few minutes' walk from campus and close to supermarkets, malls, and public transport. Organised events and activities are offered to help you get settled, find the support you need, and, most importantly, enjoy the residential community on campus.

The apartments are home to students of all ages, at all levels of study, and from all over the world.

You'll have a single, fully furnished room with internet access and shared kitchen, living, bathroom, and laundry facilities.

This package also includes the 'Go Explore' option, where you may be able to add on a free stay for up to two weeks at another Campus Living Village property in Australia, before or after your UC semester.

For further information, please email live@ucastudentvillage.co.nz

If you are with a Study Abroad Programme, please check if an online application is required, or whether your application is part of a group contract.



'I stayed in Ilam Apartments and was very pleased with the accommodation. I felt welcomed from the minute that I entered the Accommodation Office. I met people from all over the world, and it was a great fit for me as an exchange student.'

Maria Ahrensberg
Denmark



Other housing options

Homestay or private rental

www.canterbury.ac.nz/life/accommodation/homestay-and-private-board
www.canterbury.ac.nz/life/accommodation/private

Other halls of residence and villages

Students on a full-year Study Abroad or exchange programme (February–November) may choose to apply for one of UC's other halls of residence or villages.

Please note application due dates apply.

Free airport pickup

If you are arriving in New Zealand for the first time, you are eligible for a free airport pickup service. Please ensure your accommodation has been booked and your accommodation provider is aware of your arrival date and time.

www.canterbury.ac.nz/international/how-do-i-enrol/prepare-for-your-move-to-nz/arriving-in-christchurch/airportpickup

More information

www.canterbury.ac.nz/life/accommodation/international/exchange

‘Back at my home university, the domestic and international students keep to themselves and don't tend to interact much. Here at UC, I have found the exact opposite. You are part of the UC family, no matter where you are from.’

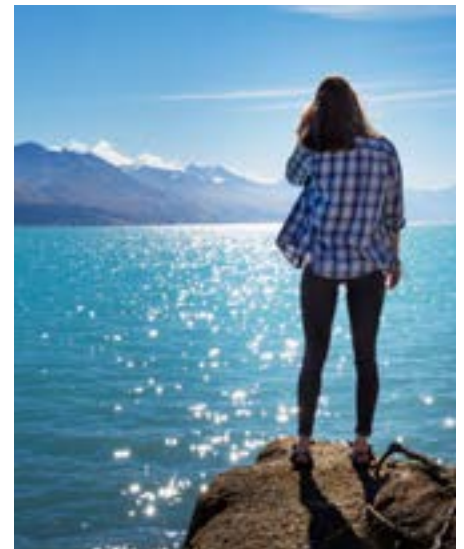
Zachary Logounov

USA

Study Abroad UC

See what our Study Abroad students have been up to during their studies and travels on our Facebook page www.facebook.com/StudyAbroadUC
Check out the day-to-day experiences of university students and staff at <https://ucnow.canterbury.ac.nz>





Photos: Left page, left to right: **Wharariki Beach** (Photo courtesy of Virginia Speidel, USA); **Abel Tasman National Park** (Photo courtesy of Kajsa Westberg, Sweden); **Mount Aspiring National Park** (Photo courtesy of Bryce Allen, USA); **Fiordland** (Photo courtesy of Catarena Cathcart, USA); **Mt Dobson** (Photo courtesy of Madi Bohling, USA); **Milford Sound** (Photo courtesy of Han Jing Teh, Singapore); **Hokitika Gorge** (Photo courtesy of Matt Guiang, USA).
 Photos: Right page, left to right: **Victoria Park** (Photo courtesy of Oakley Wurzweiler, USA); **Purakanunui Falls** (Photo courtesy of John Van Citters, USA); **Abel Tasman** (Photo courtesy of Katherine Kuklewicz, USA); **Mt Cook** (Photo courtesy of Lukas Zeller, USA); **Lake Pukaki** (Photo courtesy of Reeves Goettee, USA).

Ready to apply?



If you are ready for a Study Abroad experience you'll never forget, just follow the steps below.

Code of Practice

The Education (Pastoral Care of International Students) Code of Practice 2016 is designed to guide institutions in their practice, and protect international students when they study in Aotearoa. UC is a signatory to the Code, and is required to meet the standards set by the Aotearoa New Zealand government.

www.nzqa.govt.nz/providers-partners/education-code-of-practice

The first thing you should do if you have concerns with your UC experience is to contact Atawhai Ākonga | Student Care, Te Rōpū Ākonga o Te Whare Wānanga o Waitaha | UCSA, or the University Grievance Coordinator.

www.canterbury.ac.nz/support/code

If your concerns are not resolved by UC internal grievance procedures, you can get help from NZQA. They provide an independent assessment of your complaint, and will either investigate your concerns or advise what you can do next.

Contact NZQA at www.nzqa.govt.nz, email gadrisk@nzqa.govt.nz or call 0800 697 296.

If your concern is about a financial or contractual dispute, you can contact iStudent Complaints at www.istudent.org.nz or 0800 00 66 75.

This is a free, independent service for full-fee paying international students.

Check your eligibility

In general, you are eligible to apply to study abroad at the University of Canterbury if you meet the following criteria:

- You have completed at least one year of university study at a recognised university or college (in many cases students who have completed less than a year of university study may also be eligible to apply. Gap year and freshman options are also available. Please contact the International Relationships Office for advice).
- You have a Grade Point Average (GPA) of 2.8 or higher (on a scale of 4), or a B average or higher.
- You meet UC's English language requirements.

Students who are not native English speakers usually need to provide an acceptable score in a standard English language test.

www.canterbury.ac.nz/enrol/international/english

Students from Germany may submit an acceptable score in the German DAAD test instead of IELTS or TOEFL.

Students from Germany, Norway, Denmark, or Sweden, with a pass at a specified level in their final year of high school study, may be exempt from a language test.



'UC offers a wide range of courses from science and engineering to multiple cultural experiences. I am enjoying my courses this semester and broadening my horizons. I expected New Zealand to be smaller, but there is so much to do and see!'

Doug Monnig

USA



Plan your courses

To identify suitable courses offered in the semester you wish to study at UC, see www.canterbury.ac.nz/courses

A list of courses offered in 2019 is also provided on pages 11-18. This is only a guide, as course offerings may change from year to year.

Check with your home institution that the courses you want to take at UC are acceptable for credit back home.

Courses restricted for Study Abroad students may include:

- Fine Arts (studio art) courses
- 200-level Law courses
- distance learning courses
- some Teacher Education courses
- some clinical practice courses.

Note: some courses will require you to have the necessary prerequisites before enrolling or may have limited spaces available.

Your course choices are flexible. If you arrive at UC and find you are in an unsuitable class, you can make course changes for a limited time.

Mark the date

| Recommended application dates | |
|-------------------------------|------------------|
| 2020 Semesters | Due date |
| Semester 1 (February–June) | 15 November 2019 |
| Semester 2 (July–November) | 1 May 2020 |

Applications after these dates will be processed, but please ensure you allow time for all the necessary travel preparations, including applying for and receiving a student visa before you travel.

UC's Semester 1 runs from February–June, and Semester 2 from July–November.

Please also note the housing application dates on page 22

Complete the online application

<https://myuc.canterbury.ac.nz/login>

Within a few weeks, we will contact you by email to let you know if your application has been successful. We will then email you an information package. This will include an Offer of Place letter (which you will need in order to apply for a visa) and information about enrolment, accommodation, and international student orientation.

Pay tuition fees

In 2020, the undergraduate Study Abroad tuition fee will be NZ\$12,575 per semester. This allows you to take undergraduate courses across different subject areas. This is a flat programme fee — fees are not charged per course.

Some courses may have an additional compulsory course cost (such as a field trip) and this cost will be added onto your Study Abroad tuition fee.

All students also pay a Student Services Levy calculated on the number of points enrolled in (45 points = \$326.25/60 points = \$435).

Tuition fees will differ for postgraduate Study Abroad applicants who pay fees on a per-course basis.

Living expenses

Living expenses will vary depending upon your accommodation and lifestyle choices. We recommend that you budget for at least NZ\$7,500 for a semester (from NZ\$15,000 per year), excluding airfares and tuition.

Get financial assistance

UC offers a scholarship programme for Study Abroad students. A number of Study Abroad Awards will be available to full-fee paying Study Abroad students who are enrolled in a full-time degree programme at a recognised institution outside of New Zealand, and who wish to study at UC for one semester, or one year under UC's Study Abroad programme.

More information

International Relationships Office
E: ucmobility@canterbury.ac.nz
www.canterbury.ac.nz/study/study-abroad-and-exchange/study-abroad

Prepare to travel safely



Castle Hill, Canterbury,
(Photo courtesy of Ben Platt, USA).

Student visa

When your application is approved we will issue you with an Offer of Place letter, which you will need before you can apply for a visa.

You will need to apply for and receive your student visa before travelling to New Zealand.

In order to fulfil the requirements of your student visa, you must be a full-time student.

For full details of visa requirements, and how to apply for a student visa, see www.canterbury.ac.nz/international/how-do-i-enrol/prepare-for-your-move-to-nz/visas-and-immigration and www.immigration.govt.nz/new-zealand-visas/options/study

Medical and travel insurance

It is a requirement of the New Zealand government that all international students have appropriate medical and travel insurance.

Studentsafe-University Insurance

You can purchase Studentsafe-University cover when you complete your enrolment in New Zealand. Studentsafe-University meets the standards of the Code of Practice for the Pastoral Care of International Students. www.canterbury.ac.nz/support/code

Every student intending to purchase Studentsafe-University Insurance is covered by the Studentsafe-University policy from the time they leave home (up to 31 days prior to enrolment).

So, if you intend to enrol at UC, you do not need to purchase your own insurance before you leave home.

The cost of this insurance will be added to your enrolment fees. The policy covers transit stopovers, but does not cover stopovers regarded as holidays.

Pre-existing medical conditions

Pre-existing medical conditions are not automatically covered by Studentsafe-University Insurance. These are medical or physical conditions that you have before you enrol in a plan, and can extend to conditions you were aware of, but did not seek treatment for.

If you require additional cover for a pre-existing medical condition with Studentsafe-University, you need to apply for cover by completing a medical risk assessment form online.

If you have a pre-existing medical condition and you intend to purchase another University-approved policy, you need to check whether your pre-existing condition is covered.

Purchasing private medical and travel insurance

If you do not want to purchase Studentsafe-University Insurance you must arrange an alternative approved insurance plan. A number of insurance plans are available that meet the minimum requirements for international students.

www.canterbury.ac.nz/international/how-do-i-enrol/prepare-for-your-move-to-nz/insurance

Eligibility for health services

Please note that most international students are not entitled to publicly funded health services while in New Zealand. If you receive medical treatment during your visit, you may be liable for the full costs of that treatment. To check your entitlement to publicly funded health services, see www.health.govt.nz

Accident Insurance

The Accident Compensation Corporation (ACC) provides accident insurance for all New Zealand citizens, residents, and temporary visitors to New Zealand, but you may still be liable for all other medical and related costs. www.acc.co.nz

More information

www.canterbury.ac.nz/international/how-do-i-enrol/prepare-for-your-move-to-nz/insurance

We look forward to welcoming you to UC



Feedback from previous Study Abroad students

'The MAOR 165 Māori course was the most interesting class because it gave me the opportunity to learn about New Zealand's history and culture. For me, this was one of the reasons of going abroad: learning about another culture. I recognised a lot of what I had learned on my travels throughout the country, and appreciated that.'

Christina Gallinat, Germany

'New Zealanders truly have a strong passion for the sustainability of the Earth. I have done four Great Walks, ice-climbed Fox Glacier, and mountain-biked around the South Island, plus I've done my share of kayaking, surfing, and white water rafting. I have bungy jumped the Auckland Bridge and the Ledge in Queenstown. I skydived over Wanaka, and shark cage dove in Stewart Island.'

Richard Podpirka, USA

'Through being involved with a lot of different activities and meeting people with different opinions and backgrounds, I've discovered how diverse UC is. I am in class with people from all over the world every day, and it makes for interesting discussions and really broadens your horizons, and gets you thinking about ideas.'

Laura Schnelle, Germany

'There's nowhere better than the University of Canterbury for bringing together the best professors and professionals in the field. The University has a wide range of research in construction and I decided to be part of this group of researchers.'

Gabriel Coelho, Brazil

'The mid-semester field trip for my Ecology class was an experience I would not have been able to have at my home university. Doing field work in Arthur's Pass was a great experience that gave me a taste of what it's really like to do research in a natural environment.'

Hayley Rylander, USA

More information

E: ucmobility@canterbury.ac.nz
www.canterbury.ac.nz/study/study-abroad-and-exchange/study-abroad



'I got to learn about the local government system in Christchurch which gave me a unique perspective about the city, outside of UC. It was also a great experience to see the differences in work-life balance while working in another country.'

Naomi Kellog
USA



UC International:

T: +64 3 369 3999
E: ucmobility@canterbury.ac.nz

University of Canterbury
Te Whare Wānanga o Waitaha
Private Bag 4800
Christchurch 8140
New Zealand

www.canterbury.ac.nz



Commitment partner of:



Official sponsor of:



Tell us what you think of this publication at
publications@canterbury.ac.nz