

# Information Session-The University of Tulsa



THE UNIVERSITY *of*  
**TULSA**



# THE UNIVERSITY OF TULSA

- Founded in 1894.
- Private and doctoral degree-granting coeducational institution
- 66 bachelor's, 28 master's, 15 doctoral programs available.
- **Top 75** Private University in the US! (US News Ranking)
- **Top 500** globally by the Times Higher Education World University Rankings
- **#3** Petroleum Engineering Program in the US!







# QUICK FACTS

3,705

students  
from

13

average  
class size

43 66

states countries

---

student-  
faculty ratio

11:1

---

488

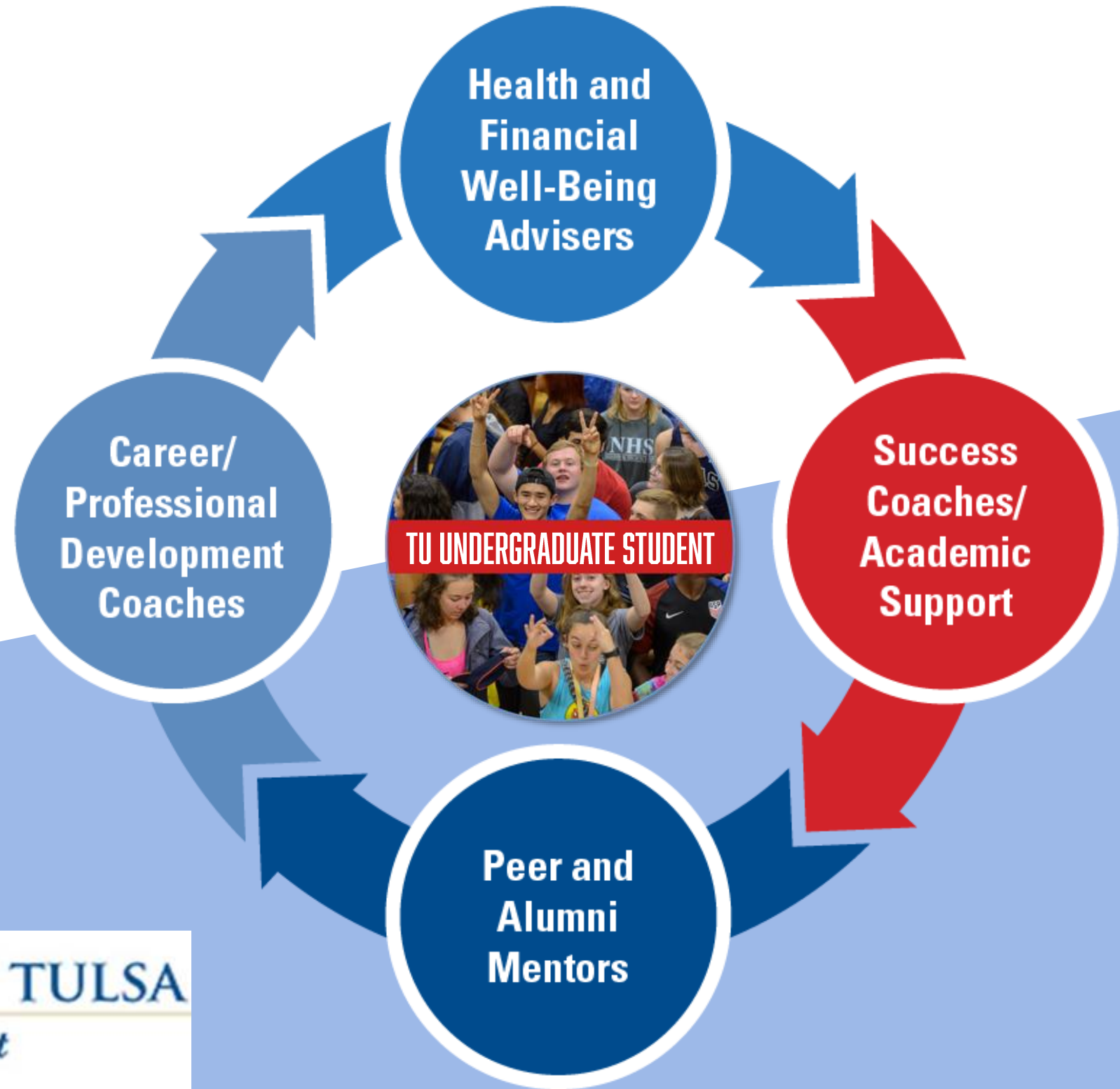
freshman class

placement rate

93%



# STUDENT SUCCESS



THE UNIVERSITY OF TULSA  
*Center for Global Engagement*

# EXPERIENTIAL LEARNING





# STUDENT GLOBALIZATION



Study Abroad



Class Trips



JumpStart TU



International Community





# OUR CITY



Art



Music



Sports



Attractions



# UNDERGRADUATE ADMISSION CRITERIA

## English Proficiency

TOEFL 70  
IELTS 6.0  
Duolingo English Test 105

## Official Transcript

GPA: 2.5 or above (TU calculation)

**Highly Encouraged**

## Personal Statement

## Recommendation





# Scholarships for 2+2 students

**University Partnership Scholarship: \$13,500**

## Tuition and Fees

- Tuition—Fall & Spring: \$45,566 (\$32,066 after the scholarship applied)
- Fees: \$1,220
- Health Insurance: \$2,223
- Other Estimated Living Expenses: \$17, 516

Total for Certificate of Financial Resources: \$66, 525 (**\$53,025** after the scholarship applied)





# GRADUATE ADMISSION CRITERIA

## English Proficiency

TOEFL 80/ 90  
IELTS 6.0/ 6.5  
Duolingo English Test 110

## Official Transcript

GPA: 3.0 or above (TU calculation)

## GRE/GMAT

## Statement of Purpose

2-3 letters of Recommendation

## Resume/CV





## COST OF ATTENDANCE

Tuition and Fee	\$28,495
Personal and living Expense	\$20,366
I-20 Funding Requirement	\$48,861

## SCHOLARSHIPS

- Merit-based scholarships
- Automatic evaluation after admission

## Assistantships

- Tuition coverage
- Health insurance coverage
- \$1,800 monthly stipend





# Timeline for program students

- Step 1: interested students should visit your International affairs office to complete all required internal documents and process.
- Step 2: complete TU online application, submit all required documents
- Step 3: receive admission letter and I-20
- Step 4: apply for visa
- Step 5: apply for on-campus housing, prepare for departure
- Step 6: arrive in Tulsa, attend orientation programs and enroll for classes

## Suggested application deadlines:

- First priority deadline: **Jan 31, 2023**
- Second priority deadline: **March 31, 2023**





# ON-CAMPUS HOUSING

- 44. Brown Village Apartments
- 48. Fisher Suites
- 49. Hardesty Hall
- 50. John Mabee Hall
- 56. LaFortune House
- 59. Lottie Jane Mabee Hall
- 60. Mayo Village Apartments students
- 62. Norman Village Apartments & Clubhouse

*BEST FOR...*  
 Engineering students  
 Any PG students  
 Any PG students  
 Low Cost (Dorm)  
 Low Cost (Dorm)  
 Low Cost (Dorm)  
 Any PG  
 Business students





Kiplinger



Forbes.com



THE WALL STREET JOURNAL  
WSJ



THE UNIVERSITY *of*  
TULSA

TULSA, OK  
TUH